



PARTS CATALOGUE

EGO 125LC (FUEL INJECTION)
2014

AL125FC (2BR1) MALAYSIA



1N2BR-440E1

()

AL125FC
PARTS CATALOGUE
©2013 by Yamaha Motor Co., Ltd.
1st edition, November 2013
All rights reserved.
Any reprinting or unauthorized use
without the written permission of
Yamaha Motor Co., Ltd.
is expressly prohibited.
Printed in Japan.

FOREWORD

This Parts Catalogue is related to the parts for the model(s) on the cover page. When you are ordering replacement parts, please refer to this Parts Catalogue and quote both part numbers and part names correctly.

1. Modifications or additions which have been made after the issue of the Parts Catalogue will be announced in the Parts News.

It is advisable that you make the necessary corrections to the Parts Catalogue according to the Parts News.

2. Abbreviations

The following abbreviations are used in this Parts Catalogue.

“UR” Use specified parts number.

“UN” Use as many as needed.

“AP” Alternate Parts

“LM” Locally Made (Parts need to be ordered locally)

“F#” Frame No. (Applicable machine No.)

“O/S” Over Size

3. The number of components for assembly

- Parts, which are to be supplied in an assembly, are listed with a dot (.) in front of the part name as shown below.
- The numeral appearing to the right of each component part indicates the quantity of parts for each assembly unit.

PART NO.	DESCRIPTION	Q'TY	REMARKS
2F5-83310-60	FRONT FLASHER LIGHT ASSY	2	
115-83311-60	.BULB (6V-18W)	1	

4. Applicable colours of graphics are represented in the “REMARKS” as shown below.

PART NO.	DESCRIPTION	Q'TY	REMARKS
2N4-24110-00-X5	FUEL TANK COMP.	2	MXR
3J1-24240-10	.GRAPHIC, FUEL TANK	1	FOR MXR

5. Note that the illustrations for reference in finding parts numbers are not to be used for assembling. When assembling, please use the applicable service manual.

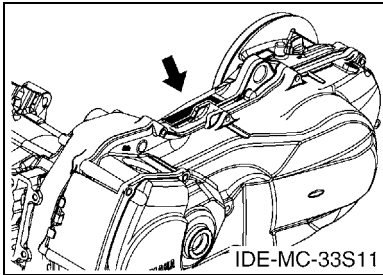
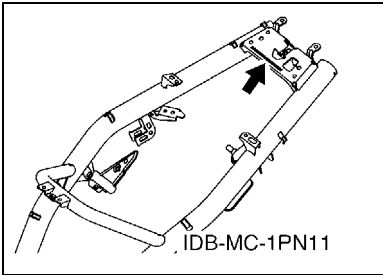
6. The asterisk (*) before a reference number indicates modified items after the first edition.

FOREWORD

7. Applicable Serial No.

Frame Serial No.

Engine Serial No.



8. Applicable Colour Code (The (*) mark shows Model colour.)

Abbreviation	Colour Name	Colour Code
BWC1	BLUISH WHITE COCKTAIL 1	0390
DBNM8	DARK BLUISH GRAY METALLIC 8	0919
DRMK(*)	DEEP RED METALLIC K	0918
MBL2	MAT BLACK 2	0582
MT1	MAT TITAN 1	0620
RYC1(*)	REDDISH YELLOW COCKTAIL 1	0251
SMX(*)	BLACK METALLIC X	0903
YB	YAMAHA BLACK	0033

9. Applicable Starting Serial No.

Frame Serial No.

Serial No.	Name Of Q'ty Column	Model Code

Engine Serial No.

Serial No.	Name Of Q'ty Column	Model Code

CONTENTS

ENGINE

CYLINDER	1
CRANKSHAFT & PISTON	3
VALVE	4
CAMSHAFT & CHAIN	5
WATER PUMP	6
RADIATOR & HOSE	7
OIL PUMP	9
INTAKE	10
EXHAUST	12
CRANKCASE	13
CRANKCASE COVER 1	15
STARTER	16
CLUTCH	17
TRANSMISSION	19

CHASSIS

FRAME	20
FENDER	21
SIDE COVER	22
REAR ARM & SUSPENSION	25
STEERING	26
FUEL TANK	28
SEAT	29
FRONT WHEEL	30
FRONT BRAKE CALIPER	31
REAR WHEEL	32
STEERING HANDLE & CABLE	33
FRONT MASTER CYLINDER	35
STAND & FOOTREST	36
LEG SHIELD	37
GENERATOR	40
STARTING MOTOR	41
FLASHER LIGHT	42
METER	43
HEADLIGHT	44
TAILLIGHT	45
HANDLE SWITCH & LEVER	46
ELECTRICAL 1	47
ELECTRICAL 2	48

INDEX

NUMERICAL INDEX	49
-----------------------	----

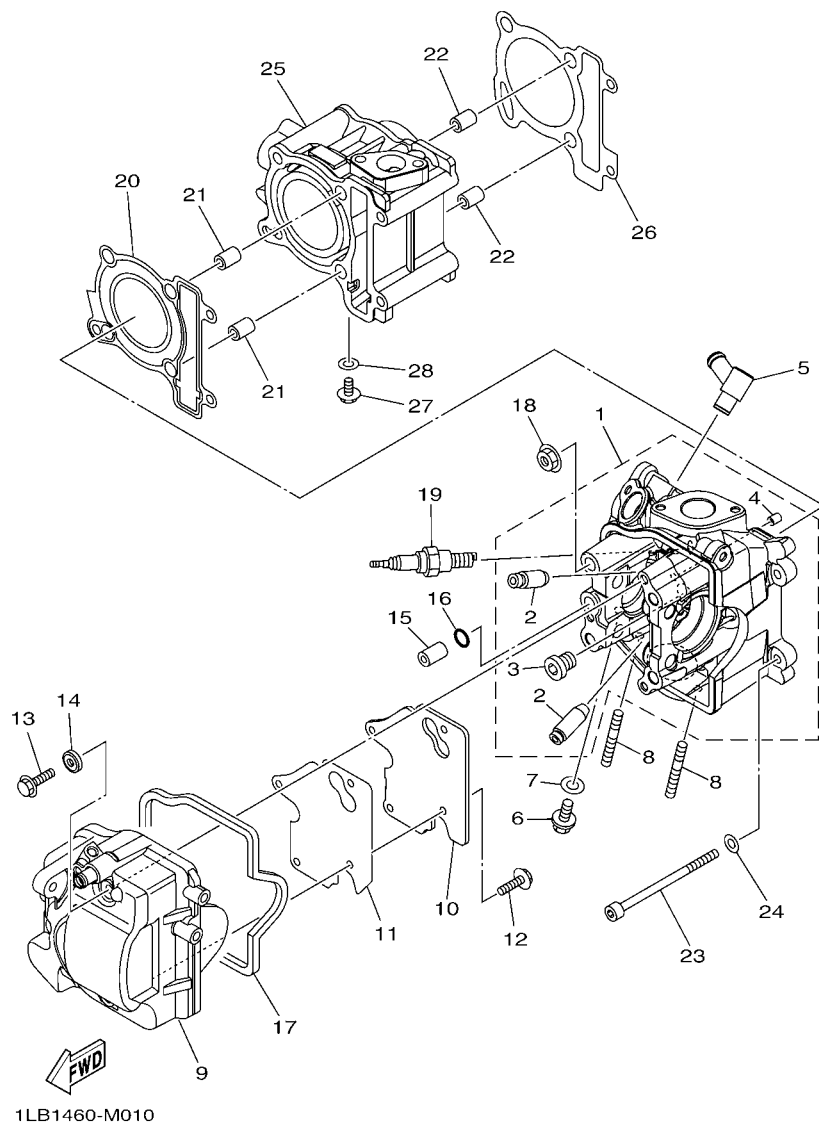


FIG. 1 CYLINDER

REF. NO.	PART NO.	DESCRIPTION	2BR1				REMARKS
1	1LB-E1102-00	CYLINDER HEAD ASSY	1				
2	33S-E1133-10	.GUIDE, VALVE 1	2				
3	90340-12813	.PLUG, STRAIGHT SCREW	1				
4	40D-E5138-00	.NOZZLE 1	1				
5	1LB-E111J-00	PIPE 1	1				
6	95022-06010	BOLT, FLANGE	1				
7	90430-06014	GASKET	1				
8	95612-08618	BOLT, STUD	2				
9	1LB-E1191-00	COVER, CYLINDER HEAD 1	1				
10	1LB-E1165-00	PLATE, BREATHER	1				
11	1LB-E1169-00	GASKET, BREATHER COVER	1				
12	95022-06014	BOLT, FLANGE	4				
13	95812-06035	BOLT, FLANGE	3				
14	1LB-E1173-00	WASHER, SEALING	3				
15	91809-14804	PIN, DOWEL	1				
16	93210-09806	O-RING	1				
17	1LB-E1193-00	GASKET, HEAD COVER 1	1				
18	90179-08518	NUT	4				
19	94700-00891	PLUG, SPARK(NGK CR7E)	1				
20	1PN-E1181-00	GASKET, CYLINDER HEAD 1	1				
21	91810-14809	PIN, DOWEL	2				
22	91810-14809	PIN, DOWEL	2				
23	91312-06095	BOLT	2				
24	90201-06034	WASHER, PLATE	2				
25	1LB-E1311-00	CYLINDER 1	1				
26	44D-E1351-00	GASKET, CYLINDER	1				
27	95022-06010	BOLT, FLANGE	1				

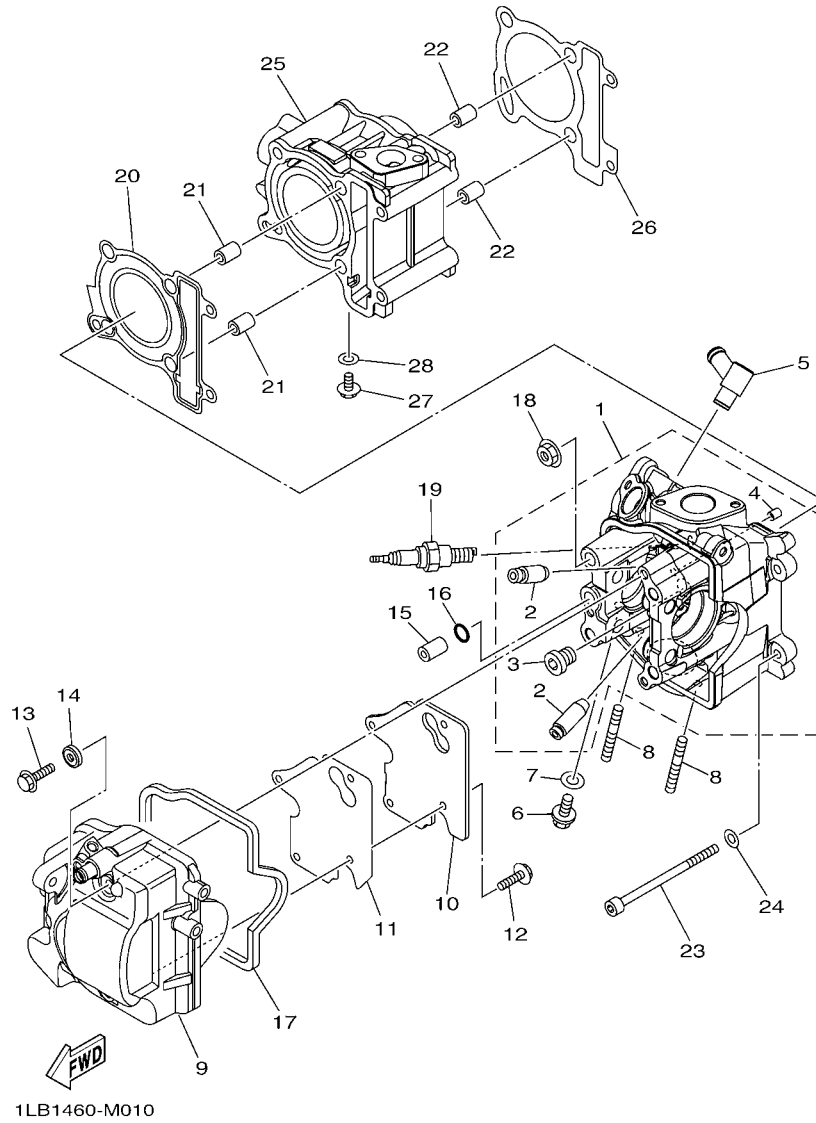
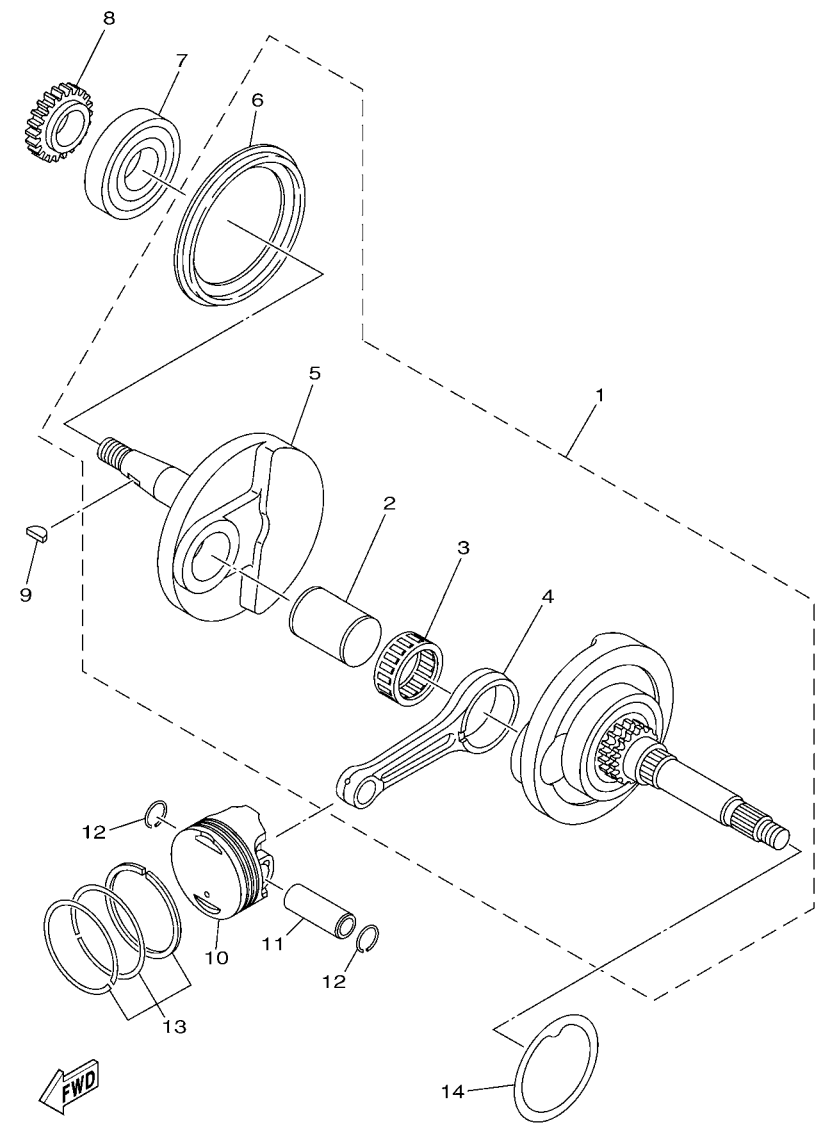


FIG. 1 CYLINDER

REF. NO.	PART NO.	DESCRIPTION	2BR1				REMARKS
28	90430-06014	GASKET	1				



1LB1460-M020

FIG. 2 CRANKSHAFT & PISTON

REF. NO.	PART NO.	DESCRIPTION	2BR1				REMARKS
1	1LB-E1400-00	CRANKSHAFT ASSY	1				
2	33S-E1681-00	.PIN, CRANK 1	1				
3	93310-628X8	.BEARING	1				
4	33S-E1651-00	.ROD, CONNECTING	1				
5	1LB-E1422-00	.CRANK 2	1				
6	5LW-E3452-00	.COVER, ROTOR FILTER	1				
7	93306-372X0	BEARING	1				UR
	93306-372Y4	BEARING	1				UR
8	44D-E3324-00	GEAR, PUMP DRIVE	1				
9	90280-03017	KEY, WOODRUFF	1				
10	33S-E1631-03	PISTON (STD)	1				
11	1S7-E1633-00	PIN, PISTON	1				
12	93450-16115	CIRCLIP	2				
13	1PN-E1603-00	PISTON RING SET (STD)	1				
14	54P-E1445-00	SPACER	1				

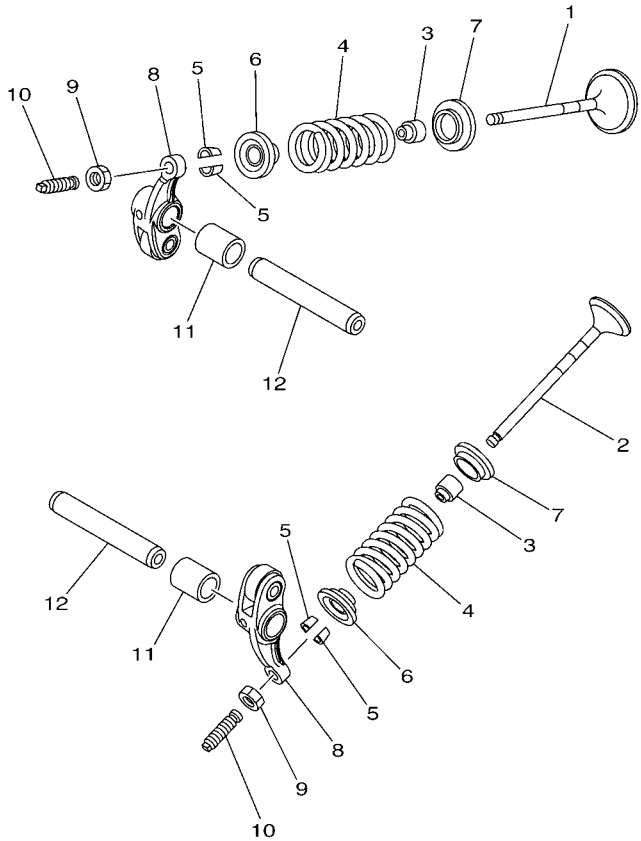
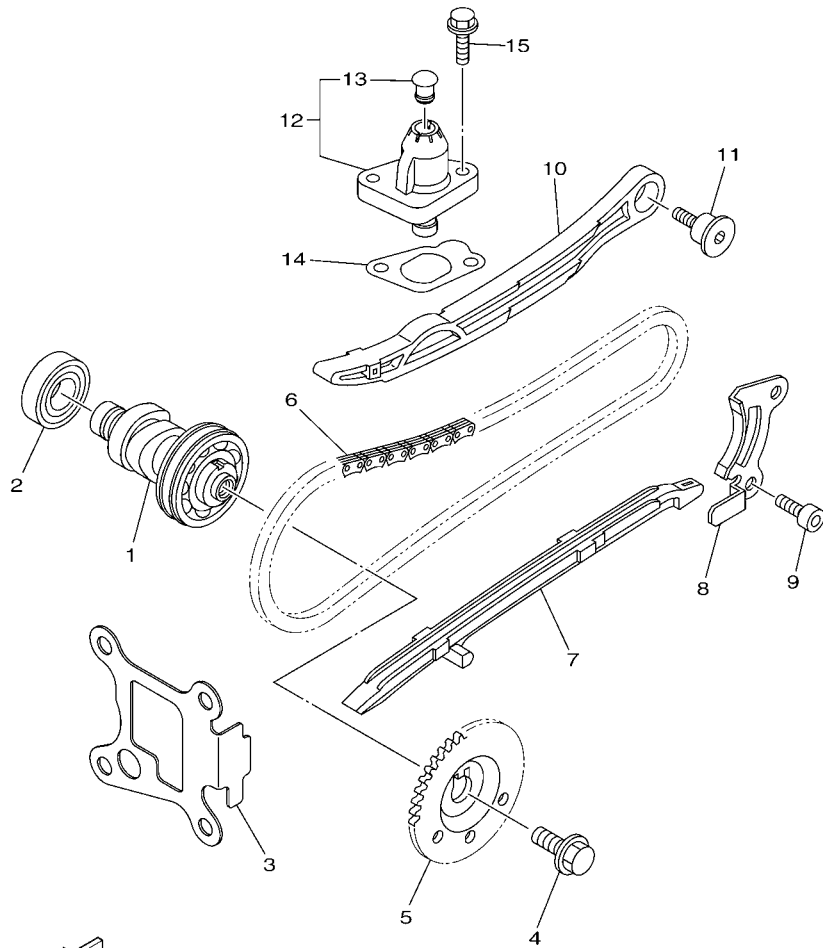


FIG. 3 VALVE

REF. NO.	PART NO.	DESCRIPTION	2BR1				REMARKS
1	54P-E2111-00	VALVE, INTAKE	1				
2	1LB-E2121-00	VALVE, EXHAUST	1				
3	54P-E2119-00	SEAL, VALVE STEM	2				
4	54P-E2113-00	SPRING, VALVE INNER	2				
5	5TL-E2118-00	LOCK, VALVE SPRING RETAINER	4				
6	54P-E2117-00	RETAINER, VALVE SPRING	2				
7	1DY-E2126-00	SEAT, VALVE SPRING 2	2				
8	54P-E2151-00	ARM, VALVE ROCKER	2				UR
	54P-E2151-10	ARM, VALVE ROCKER	2				UR
9	90170-05803	NUT	2				
10	33S-E2159-00	SCREW, VALVE ADJUSTING	2				
11	44D-E2662-00	COLLAR 1	2				
12	54P-E2146-00	SHAFT, ROCKER	2				



54S1431-L030

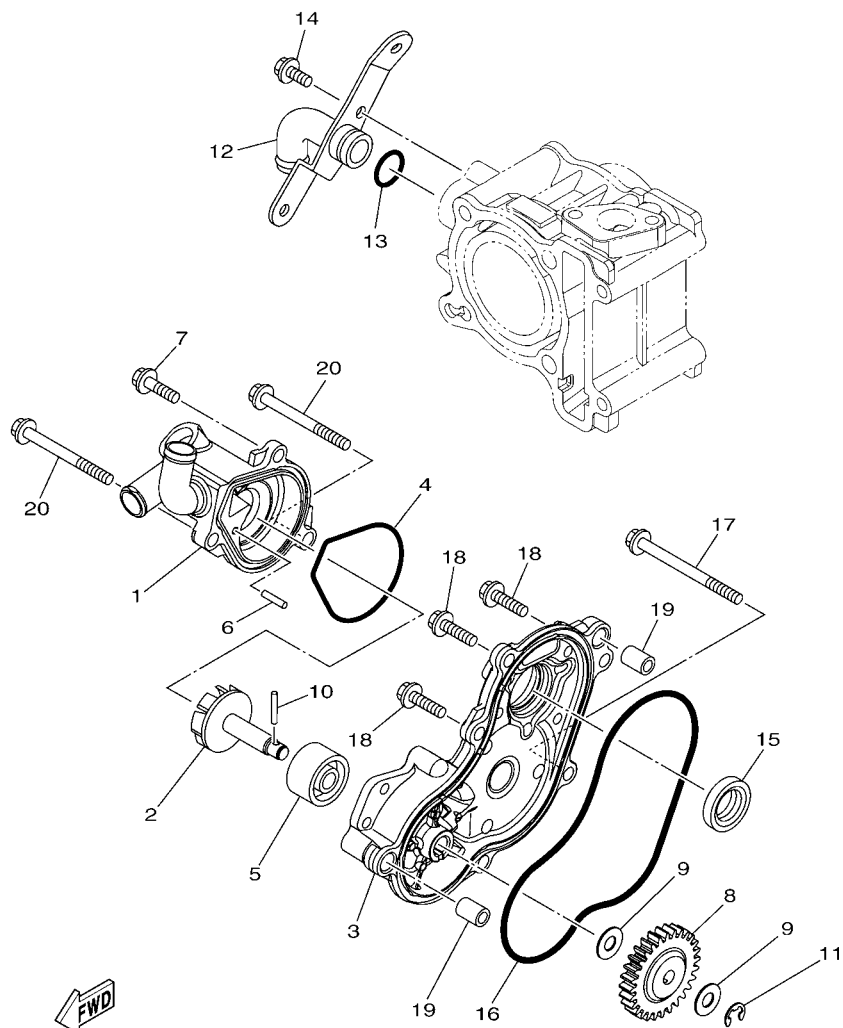



 1LB1460-M040

FIG. 4 CAMSHAFT & CHAIN

REF. NO.	PART NO.	DESCRIPTION	2BR1				REMARKS
1	1LB-E2170-00	CAMSHAFT ASSY 1	1				
2	93306-002YE	BEARING	1				
3	54P-E111F-00	PLATE	1				
4	90105-088E1	BOLT, FLANGE	1				
5	1LB-E2176-00	SPROCKET, CAM CHAIN	1				
6	94568-F9090	CHAIN	1				
7	1LB-E2231-00	GUIDE, STOPPER 1	1				
8	44D-E2233-00	PLATE, GUIDE STOPPER 1	1				
9	91312-06012	BOLT	2				
10	33S-E2241-00	GUIDE, STOPPER 2	1				
11	1LB-E2228-00	BOLT	1				
12	44D-E2210-00	TENSIONER ASSY, CAM CHAIN	1				
13	5MX-E2222-00	.PLUG	1				
14	1DY-E2213-00	GASKET, TENSIONER CASE	1				
15	95022-06020	BOLT, FLANGE	2				

FIG. 5 WATER PUMP



1PN1431-M050

REF. NO.	PART NO.	DESCRIPTION	2BR1				REMARKS
1	44D-E2422-00	COVER, HOUSING	1				
2	44D-E2450-00	IMPELLER SHAFT ASSY	1				
3	44D-E5417-01	COVER, CAP	1				
4	44D-E2439-00	O-RING	1				
5	44D-E2223-00	SEAL	1				
6	93603-10800	PIN, DOWEL	1				
7	90105-06894	BOLT, FLANGE	1				
8	44D-E2459-00	GEAR, IMPELLER SHAFT	1				
9	44D-E2456-00	WASHER	2				
10	93603-17800	PIN, DOWEL	1				
11	99002-07600	CLIP	1				
12	1LB-E2446-00	JOINT	1				
13	93210-16803	O-RING	1				
14	95022-06014	BOLT, FLANGE	1				
15	93102-19800	OIL SEAL	1				
16	93211-31800	O-RING	1				
17	95022-06070	BOLT, FLANGE	1				
18	95022-06020	BOLT, FLANGE	3				
19	91810-14809	PIN, DOWEL	2				
20	95022-06060	BOLT, FLANGE	2				

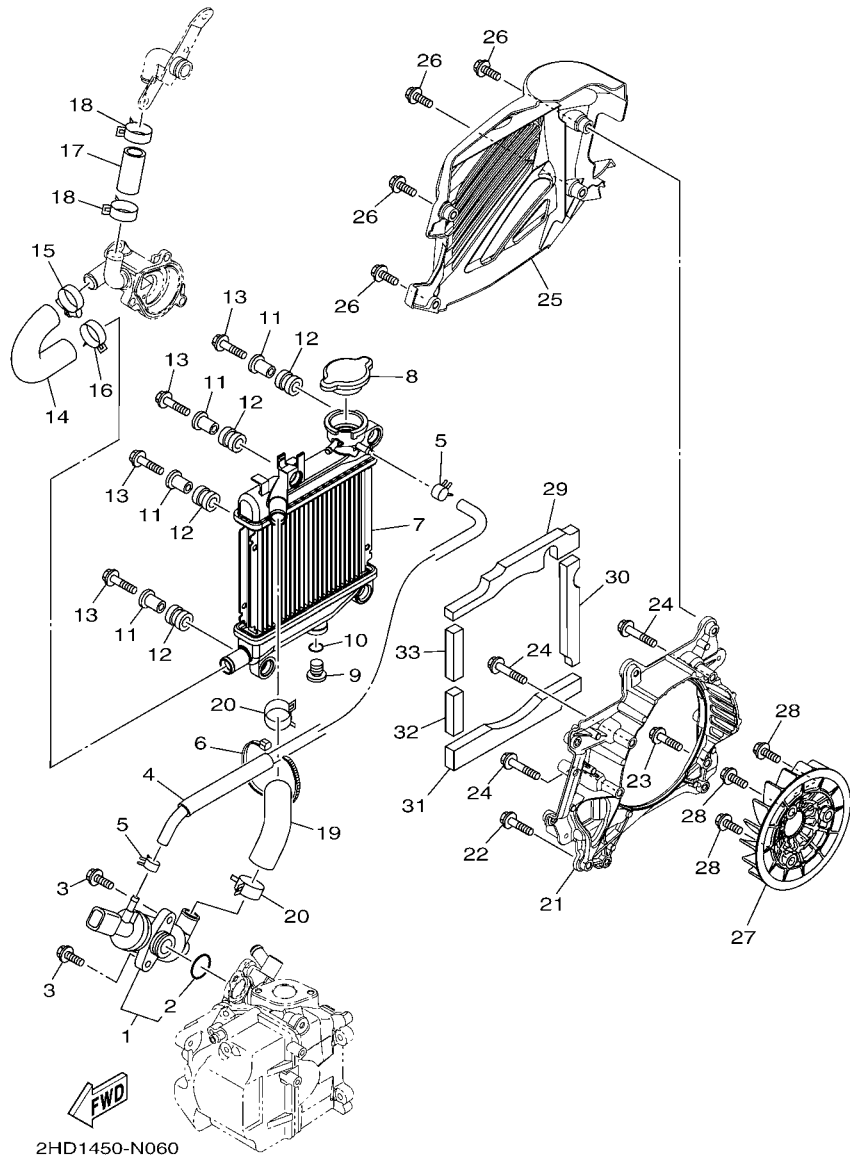


FIG. 6 RADIATOR & HOSE

REF. NO.	PART NO.	DESCRIPTION	2BR1				REMARKS
1	52S-12410-00	THERMOSTAT ASSY	1				
2	52S-12439-00	.O-RING	1				
3	95022-06020	BOLT, FLANGE	2				
4	1LB-E2463-00	PIPE, BREATHER	1				
5	90467-090A3	CLIP	2				
6	90464-13073	CLAMP	1				
7	1PN-E2460-00	RADIATOR ASSY	1				
8	33S-E2590-00	CONDUCTION ASSY	1				
9	33S-E2615-00	BOLT	1				
10	33S-E2843-00	O-RING	1				
11	90387-08823	COLLAR	4				
12	90480-15803	GROMMET	4				
13	95827-06030	BOLT, FLANGE	4				
14	44D-E2481-01	PIPE 1	1				
15	90450-27803	HOSE CLAMP ASSY	1				
16	90467-22801	CLIP	1				
17	44D-E2482-01	PIPE 2	1				
18	90467-22801	CLIP	2				
19	1LB-E2483-00	PIPE 3	1				
20	90467-22801	CLIP	2				
21	1LB-E2621-00	CASE, FAN	1				
22	95812-06025	BOLT, FLANGE	1				
23	95022-06025	BOLT, FLANGE	1				
24	95022-06035	BOLT, FLANGE	3				
25	1LB-E2467-00	COVER, RADIATOR	1				
26	95027-06020	BOLT, FLANGE	4				
27	44D-E2611-00	FAN	1				

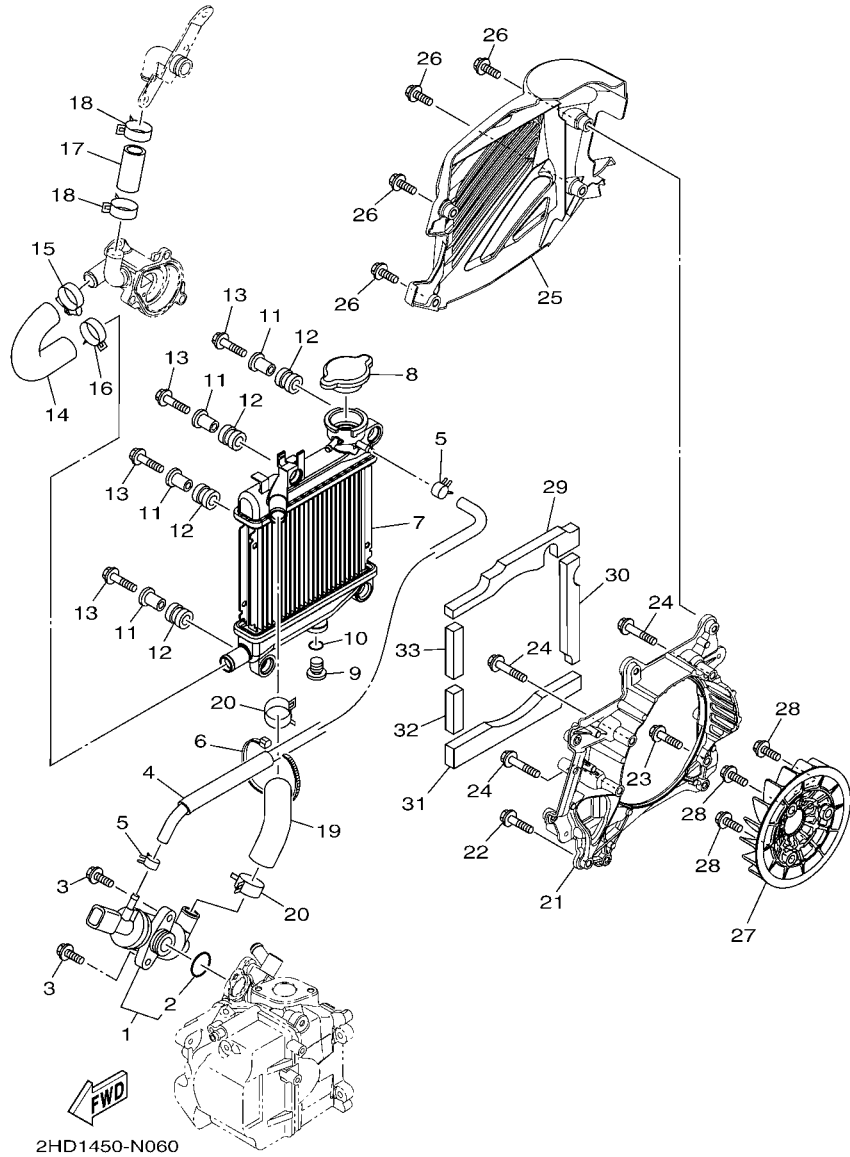
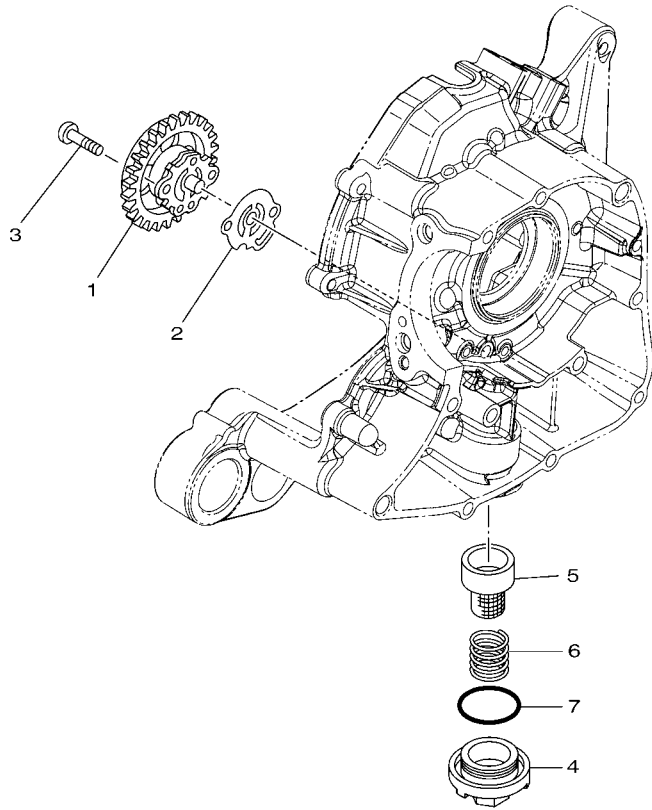


FIG. 6 RADIATOR & HOSE

REF. NO.	PART NO.	DESCRIPTION	2BR1				REMARKS
28	95822-06016	BOLT, FLANGE	3				
29	44D-E2659-00	DAMPER, AIR SHROUD 2	1				
30	44D-E2668-00	DAMPER, AIR SHROUD 3	1				
31	44D-E2669-00	DAMPER, AIR SHROUD 4	1				
32	90520-10803	DAMPER, PLATE	1				
33	90520-10804	DAMPER, PLATE	1				
<hr/>							
<hr/>							
<hr/>							
<hr/>							
<hr/>							
<hr/>							
<hr/>							
<hr/>							
<hr/>							
<hr/>							

FIG. 7 OIL PUMP



REF. NO.	PART NO.	DESCRIPTION	2BR1			REMARKS
1	44D-E3300-00	OIL PUMP ASSY	1			
2	5LW-E3475-00	GASKET	1			
3	98507-05020	SCREW, PAN HEAD	2			
4	54P-E5351-00	PLUG, DRAIN	1			
5	5LW-E3411-00	STRAINER, OIL	1			
6	90501-16004	SPRING, COMPRESSION	1			
7	93210-29800	O-RING	1			

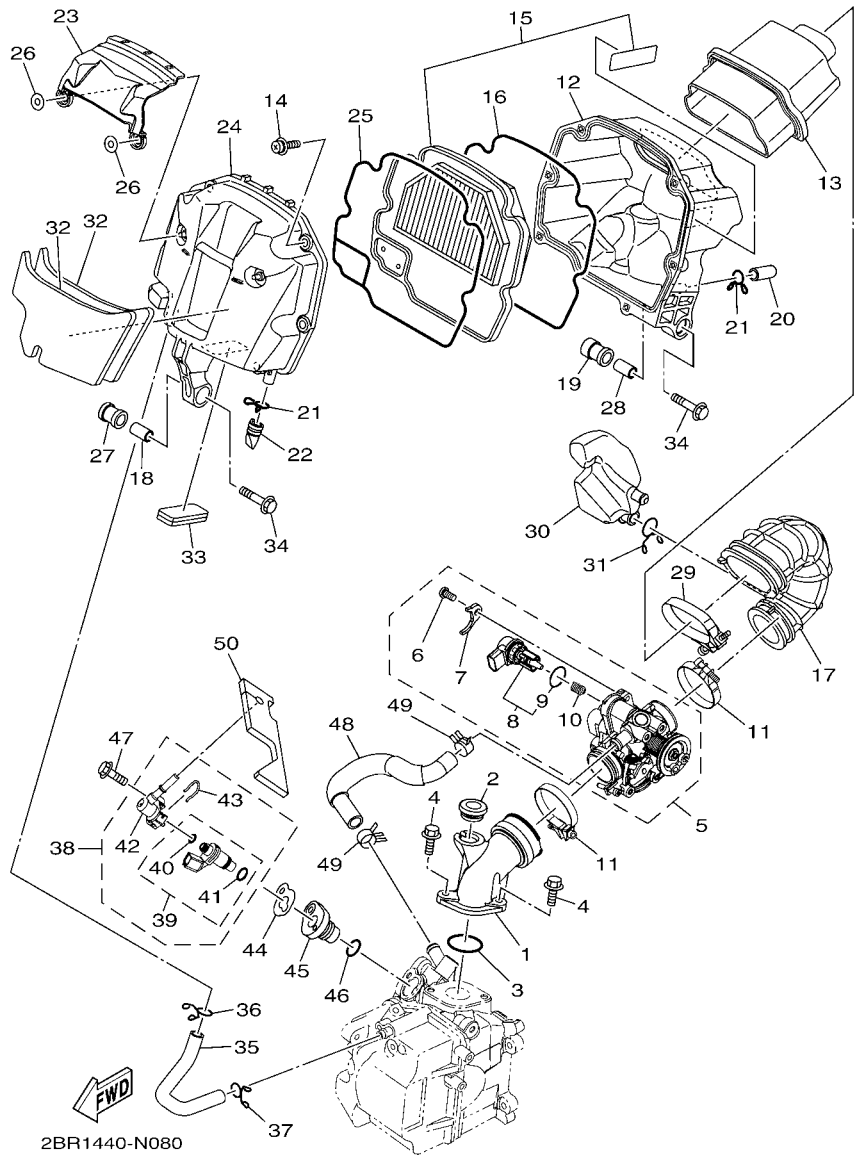


FIG. 8 INTAKE

REF. NO.	PART NO.	DESCRIPTION	2BR1				REMARKS
1	1PN-E3585-00	MANIFOLD	1				
2	1LB-E5357-00	GROMMET	1				
3	93210-30611	O-RING	1				
4	95022-06020	BOLT, FLANGE	2				
5	1LB-E3750-00	THROTTLE BODY ASSY	1				
6	98502-06012	.SCREW, PAN HEAD	1				
7	54P-E4243-00	.PLATE	1				
8	54P-H5801-00	.STEPPING MOTOR	1				
9	54P-E416A-00	..O-RING	1				
10	54P-E4335-00	.SPRING, PLUNGER	1				
11	90450-46803	HOSE CLAMP ASSY	2				
12	1LB-E4411-00	CASE, AIR CLEANER 1	1				
13	1LB-E4422-00	CAP, CLEANER CASE 2	1				
14	97602-05320	SCREW, PAN HEAD WITH WASHER	6				
15	1LB-WE445-00	AIR CLEANER ELEMENT ASSY	1				
16	1LB-E4452-00	SEAL	1				
17	1LB-E4453-00	JOINT, AIR CLEANER 1	1				
18	44D-E4449-00	COLLAR	1				
19	1LB-E4435-00	GROMMET	1				
20	5TL-E443E-00	PIPE, DRAIN	1				
21	90467-12808	CLIP	2				
22	5TP-E443G-00	PIPE, DRAIN 2	1				
23	1LB-E4417-00	COVER 1	1				
24	1LB-E4412-00	CAP, CLEANER CASE 1	1				
25	1LB-E4457-01	SEAL	1				
26	92902-05200	WASHER	2				
27	1LB-E4445-00	GROMMET	1				

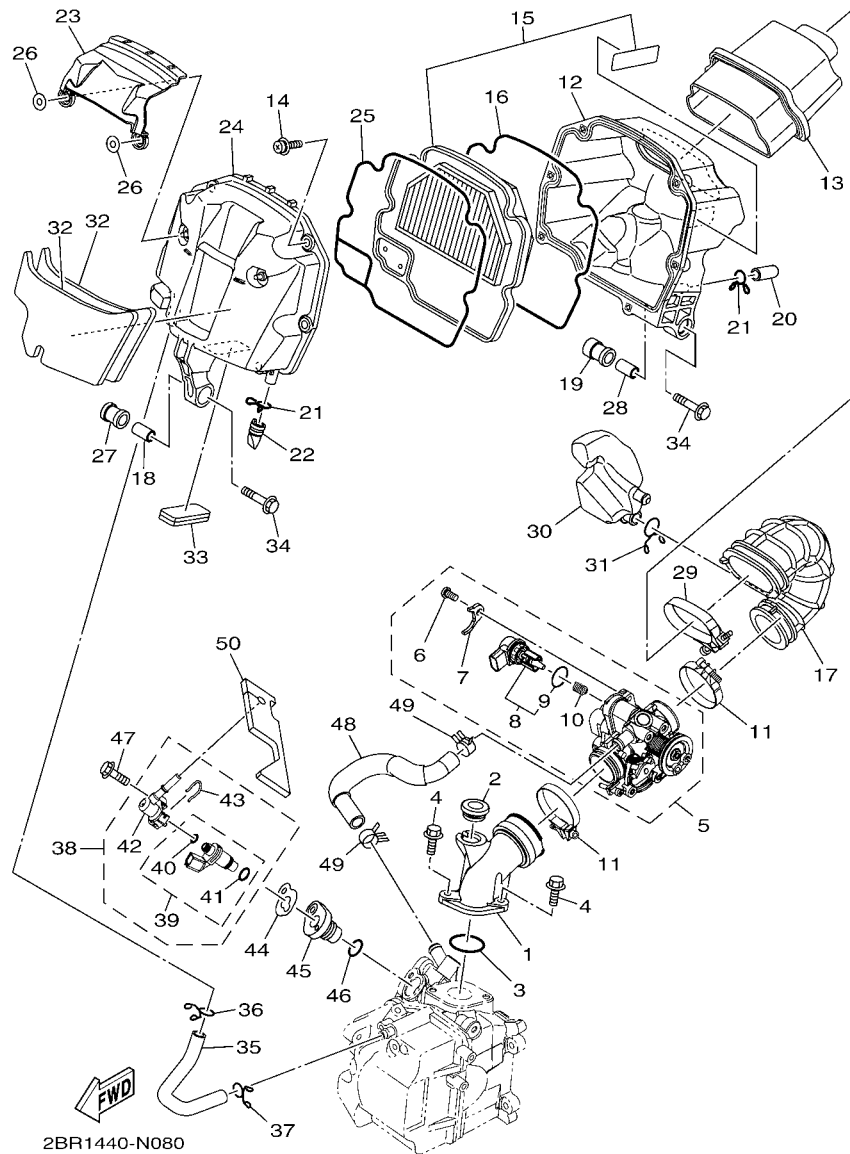
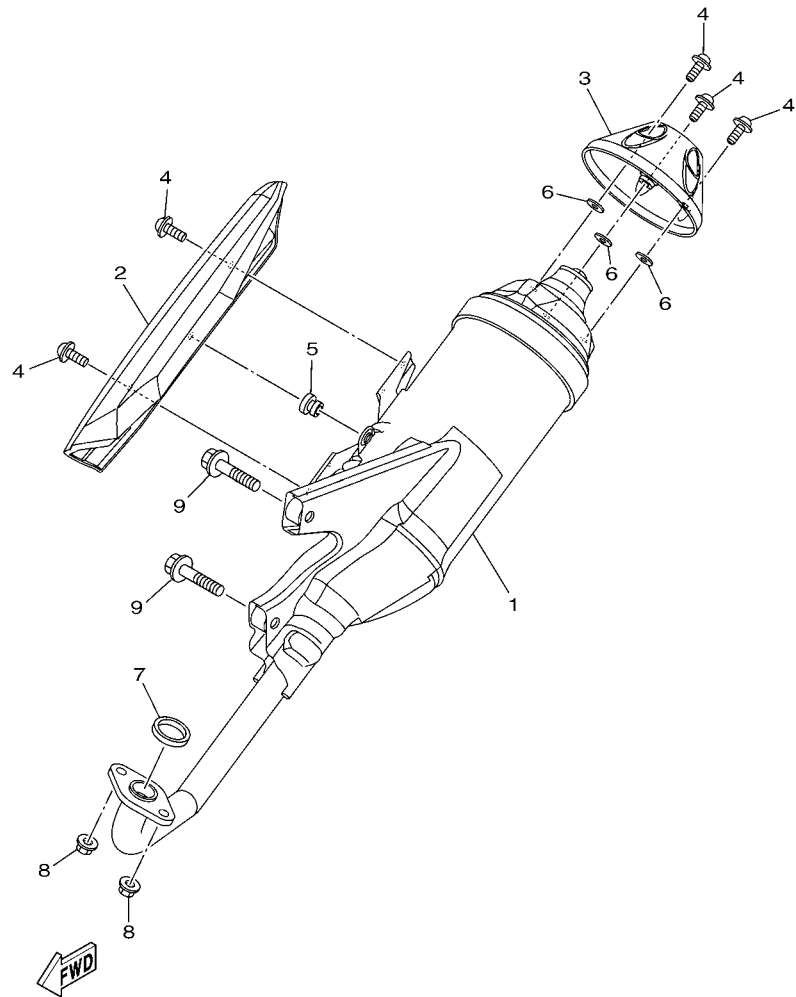


FIG. 8 INTAKE

REF. NO.	PART NO.	DESCRIPTION	2BR1				REMARKS
28	1LB-E4449-00	COLLAR	1				
29	44D-E4455-00	BAND	1				
30	1LB-E4877-00	RESONATOR	1				
31	90467-18806	CLIP	1				
32	1LB-E4409-00	DAMPER	2				
33	1LB-E4425-00	DAMPER 1	1				
34	95812-06035	BOLT, FLANGE	2				
35	1LB-E1166-00	PIPE, BREATHER 1	1				
36	90467-11825	CLIP	1				
37	90467-11825	CLIP	1				
38	1DB-E3770-00	INJECTOR ASSY	1				
39	54P-E3761-00	.INJECTOR	1				
40	54P-E4147-00	..O-RING	1				
41	5CA-E4147-00	..O-RING	1				
42	1DB-E3938-00	.PIPE	1				
43	54P-E4137-00	.CLIP	1				
44	1LB-E3557-00	GASKET	1				
45	1PN-E2572-00	ADAPTER	1				
46	93210-17802	O-RING	1				
47	95812-06030	BOLT, FLANGE	1				
48	1LB-E3895-00	HOSE, AIR	1				
49	90467-15802	CLIP	2				
50	1LB-E4426-00	DAMPER 2	1				



1PN1431-M090

FIG. 9 EXHAUST

REF. NO.	PART NO.	DESCRIPTION	2BR1				REMARKS
1	2BR-E4711-00	MUFFLER 1	1				
2	2BR-E4718-00	PROTECTOR, MUFFLER 1	1				
3	2BR-E4799-00	CAP	1				
4	90111-06807	BOLT,HEX. SOCKET BUTTON	5				
5	90480-10332	GROMMET	1				
6	90201-05817	WASHER, PLATE	3				
7	10C-E4613-00	GASKET, EXHAUST PIPE	1				
8	95702-08500	NUT, FLANGE	2				
9	95812-08045	BOLT, FLANGE	2				

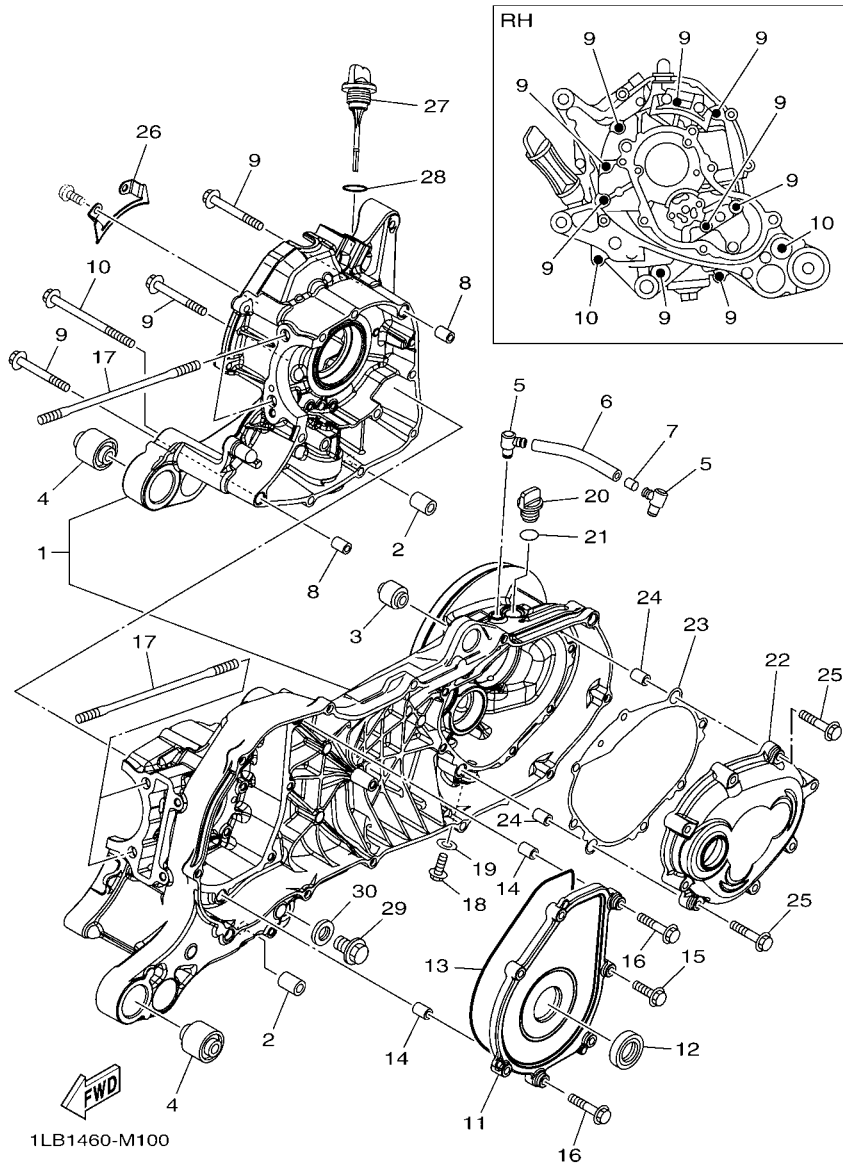


FIG. 10 CRANKCASE

REF. NO.	PART NO.	DESCRIPTION	2BR1				REMARKS
1	1LB-E5150-00	CRANKCASE ASSY	1				
2	54P-F7121-00	BUSH	2				
3	5MX-F2216-00	BUSH, REAR SHOCK ABSORBER	1				
4	90388-10808	DAMPER	2				
5	5LW-E5371-01	BREATHER	2				
6	44D-E5373-00	PIPE, BREATHER	1				
7	14D-E5408-00	ELEMENT 2	1				
8	91810-14809	PIN, DOWEL	2				
9	95022-06060	BOLT, FLANGE	9				
10	95022-06100	BOLT, FLANGE	2				
11	44D-E5423-00	COVER 2	1				
12	93102-25815	OIL SEAL	1				
13	93211-44801	O-RING	1				
14	91810-14809	PIN, DOWEL	2				
15	95022-06025	BOLT, FLANGE	5				
16	95022-06035	BOLT, FLANGE	2				
17	90116-08843	BOLT, STUD	4				
18	95812-08016	BOLT, FLANGE	1				
19	90430-08119	GASKET	1				
20	5LW-E5363-00	PLUG, OIL	1				
21	93210-14816	O-RING	1				
22	44D-E5421-00	COVER, CRANKCASE 2	1				
23	44D-E5461-00	GASKET, CRANKCASE COVER 2	1				
24	91810-14809	PIN, DOWEL	2				
25	95022-06035	BOLT, FLANGE	8				
26	54P-E5113-00	PLATE	1				
27	1LB-E5362-00	PLUG, OIL LEVEL	1				

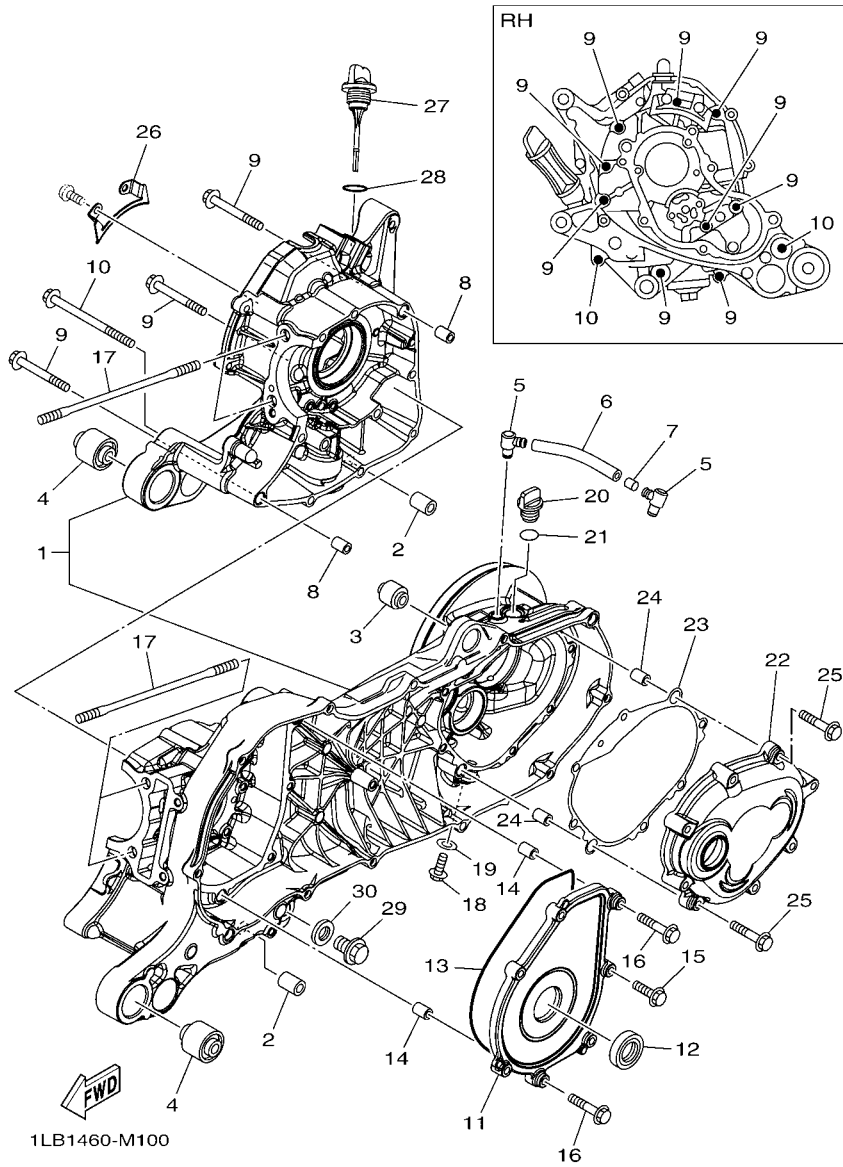


FIG. 10 CRANKCASE

REF. NO.	PART NO.	DESCRIPTION	2BR1				REMARKS
28	5LW-E3769-00	O-RING	1				
29	90340-12808	PLUG, STRAIGHT SCREW	1				
30	4YS-E1198-00	GASKET	1				

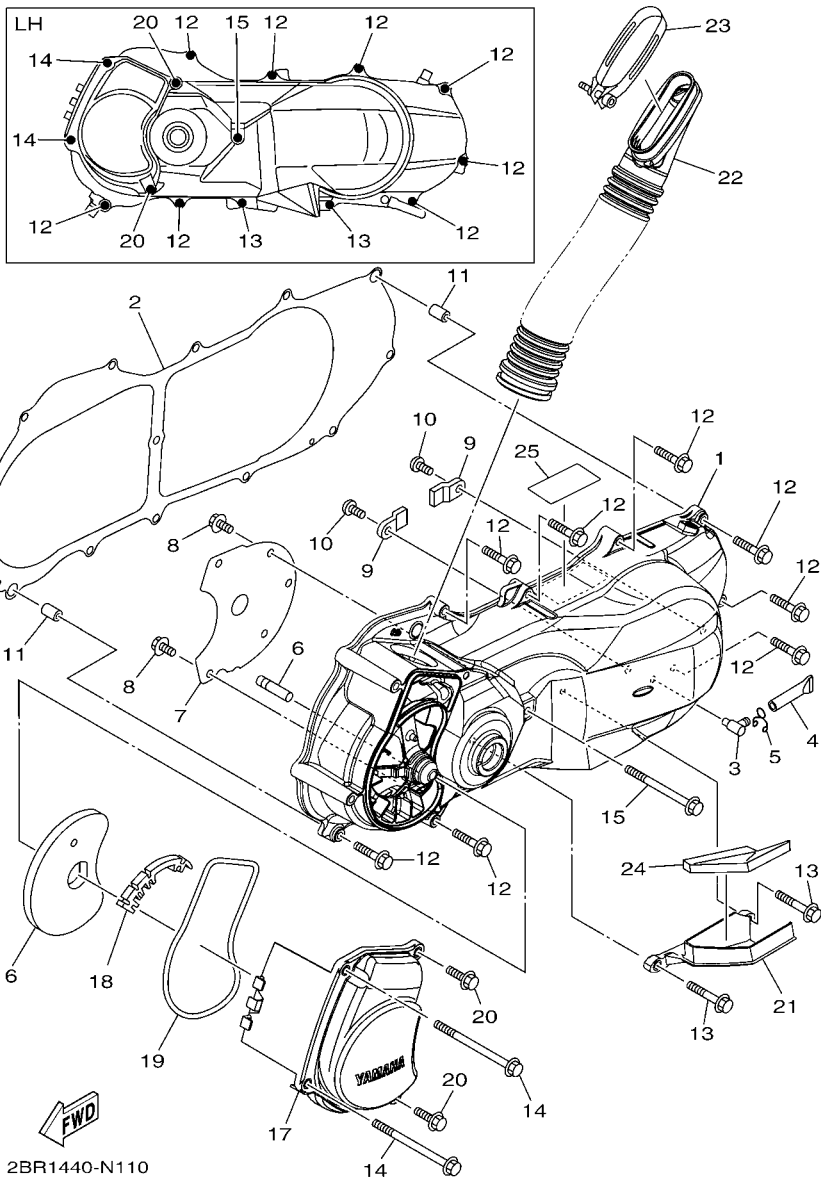


FIG. 11 CRANKCASE COVER 1

REF. NO.	PART NO.	DESCRIPTION	2BR1				REMARKS
1	1LB-E5411-00	COVER, CRANKCASE 1	1				
2	1LB-E5451-00	GASKET, CRANKCASE COVER 1	1				
3	5LW-E5371-01	BREATHER	1				
4	4ST-E443E-00	PIPE, DRAIN	1				
5	90467-11106	CLIP	1				
6	5LW-15659-01	SHAFT	1				
7	44D-E5191-00	PLATE	1				
8	95022-06010	BOLT, FLANGE	5				
9	44D-E5383-00	PLATE, BEARING COVER	2				
10	92012-06012	BOLT, BUTTON HEAD	2				
11	91810-14809	PIN, DOWEL	2				
12	95027-06035	BOLT, FLANGE	8				
13	95027-06045	BOLT, FLANGE	2				
14	95827-06090	BOLT, FLANGE	2				
15	95027-06080	BOLT, FLANGE	1				
16	44D-E5407-00	ELEMENT 1	1				
17	44D-E5471-00	DUCT, AIR	1				
18	44D-E5495-00	SEAL, PROTECTOR 1	1				
19	44D-E5472-00	SEAL, AIR DUCT	1				
20	95817-06020	BOLT, FLANGE	2				
21	1LB-E5413-00	COVER	1				
22	44D-E5473-00	DUCT, AIR	1				
23	33S-E5484-00	CLAMP 2	1				
24	1LB-E5316-00	DAMPER 1	1				
25	3XL-F178A-00	LABEL	1				

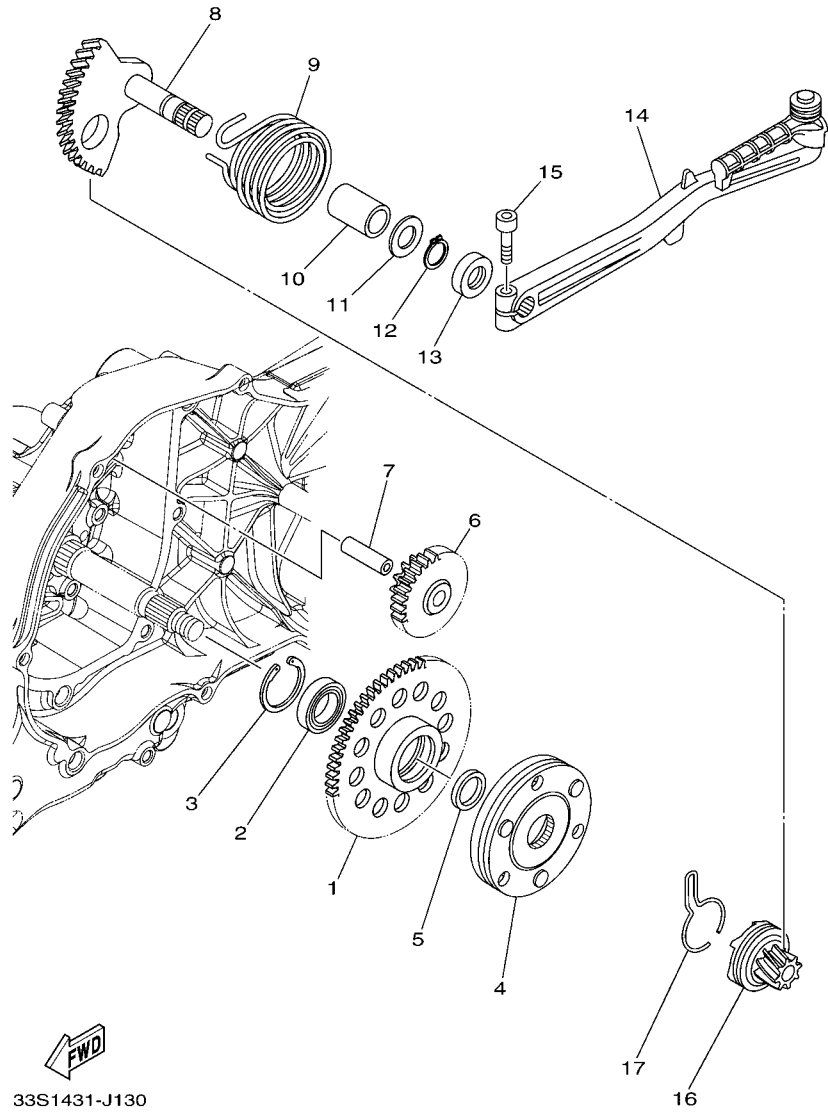


FIG. 12 STARTER

REF. NO.	PART NO.	DESCRIPTION	2BR1				REMARKS
1	44D-E5524-00	WHEEL, STARTER	1				
2	1LB-E5693-00	BEARING	1				
3	93450-32837	CIRCLIP	1				
4	44D-E5570-02	STARTER CLUTCH ASSY	1				
5	44D-E5598-00	COLLAR	1				
6	44D-E5512-00	GEAR, IDLER 1	1				
7	44D-E5521-00	SHAFT 1	1				
8	44D-E5601-00	KICK SHAFT ASSY	1				
9	90508-32768	SPRING, TORSION	1				
10	90380-15810	BUSH, SOLID	1				
11	90201-154E8	WASHER, PLATE (T=1.0)	1				
12	99009-15400	CIRCLIP	1				
13	93102-15801	OIL SEAL	1				
14	44P-E5620-00	KICK CRANK ASSY	1				
15	91317-06025	BOLT	1				
16	44D-E5630-00	KICK PINION ASSY	1				
17	5MX-E5673-00	CLIP	1				

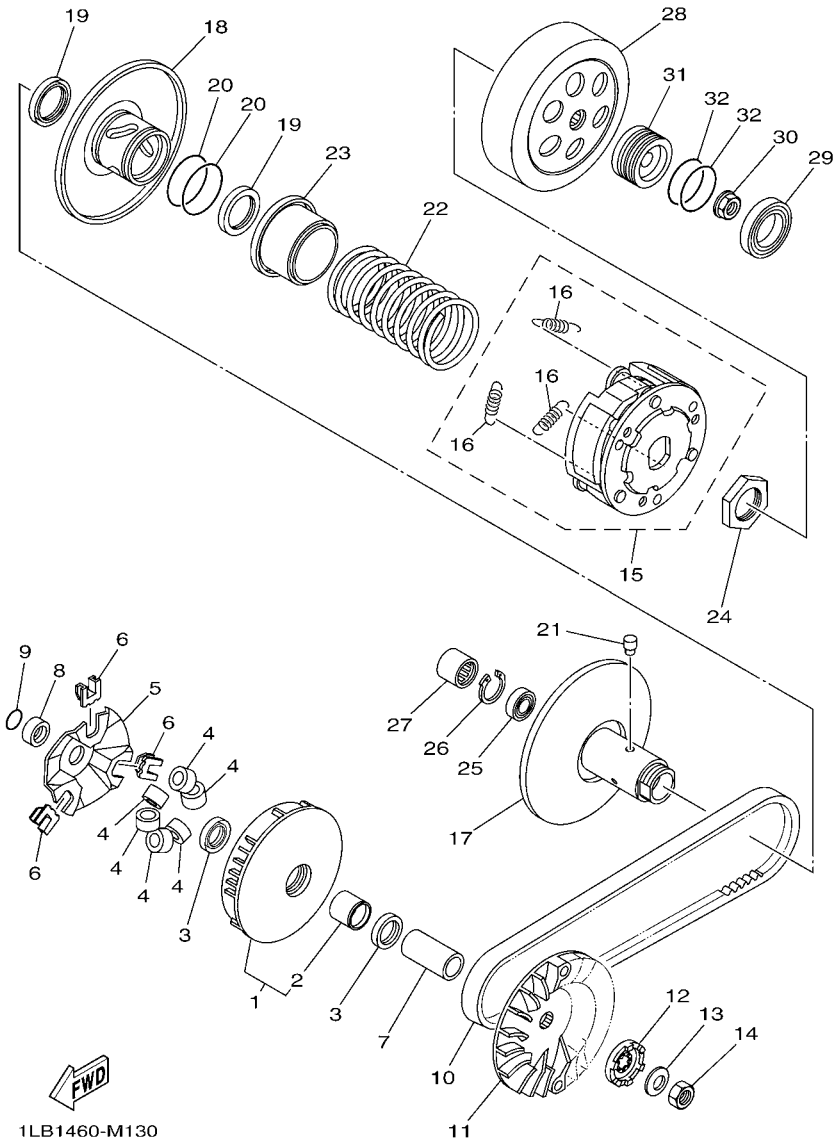


FIG. 13 CLUTCH

REF. NO.	PART NO.	DESCRIPTION	2BRT				REMARKS
1	44D-E7620-00	PRIMARY SLIDING SHEAVE COMP.	1				
2	90380-23800	.BUSH, SOLID	1				
3	93101-23801	OIL SEAL	2				
4	44D-E7632-00	WEIGHT	6				
5	44D-E7623-00	CAM	1				
6	44D-E7653-00	SLIDER	3				
7	90387-16815	COLLAR	1				
8	44D-E7645-00	COLLAR	1				
9	93210-16805	O-RING	1				
10	44D-E7641-00	V-BELT	1				
11	44D-E7611-00	SHEAVE, PRIMARY FIXED	1				
12	5MX-E5657-00	CLUTCH, ONEWAY	1				
13	90208-12808	WASHER, CONICAL SPRING	1				
14	90170-12800	NUT	1				
15	1LB-E6620-00	CLUTCH CARRIER ASSY	1				
16	1LB-E6626-00	.SPRING, CLUTCH WEIGHT 1	3				
17	1LB-E7660-00	SECONDARY FIXED SHEAVE COMP.	1				
18	1LB-E7670-00	SECONDARY SLIDING SHEAVE	1				
19	1LB-E7465-00	SEAL	2				
20	93210-42802	O-RING	2				
21	1LB-E7664-00	PIN, GUIDE	3				
22	1LB-E7683-00	SPRING, SECONDARY	1				
23	1LB-E7690-00	SPRING SEAT COMP.	1				
24	1LB-E7668-00	NUT	1				
25	93306-901Y6	BEARING	1				
26	1LB-E5744-00	CIRCLIP	1				
27	93317-417Y2	BEARING	1				

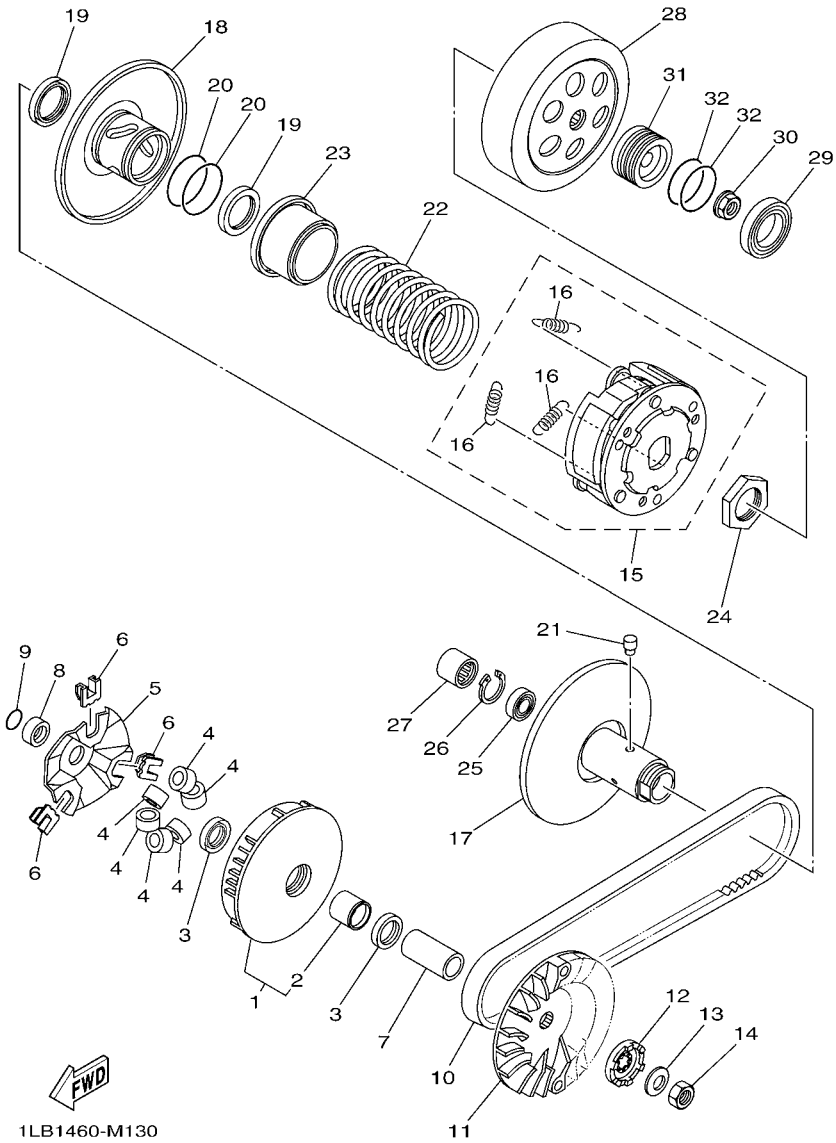
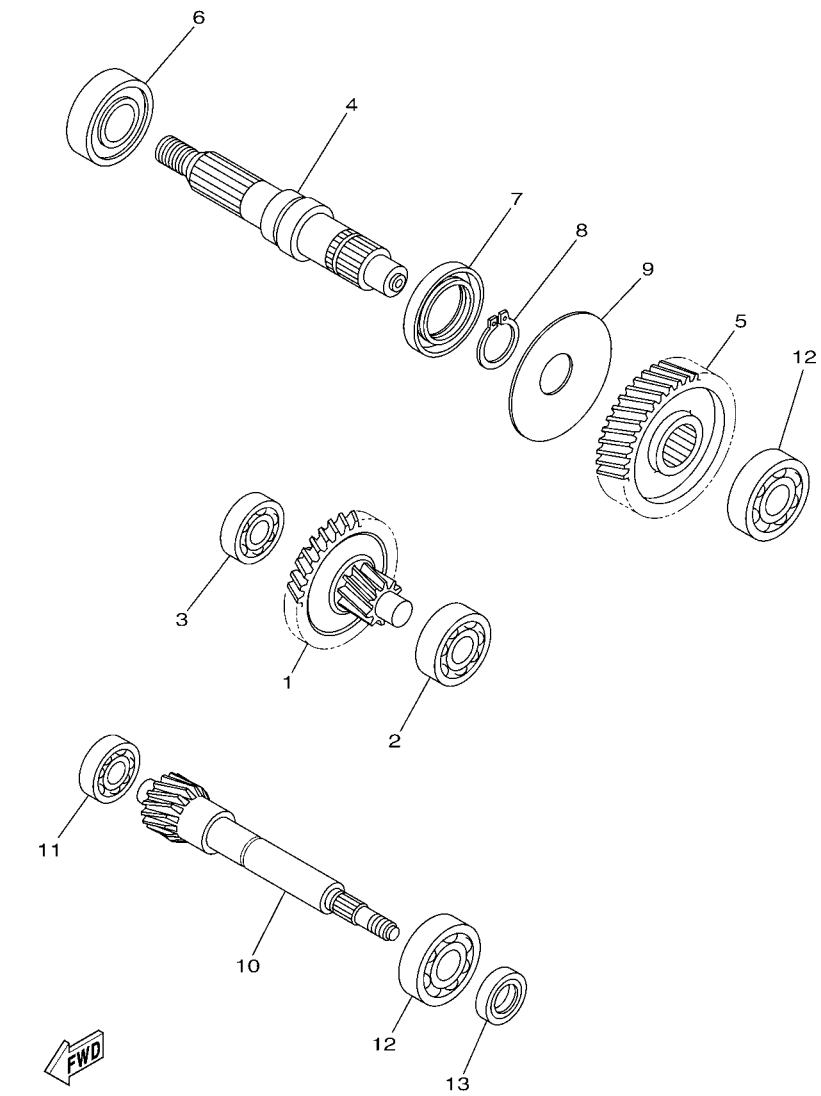


FIG. 13 CLUTCH

REF. NO.	PART NO.	DESCRIPTION	2BR1				REMARKS
28	1LB-E6611-00	CLUTCH HOUSING COMP.	1				
29	93306-082Y5	BEARING	1				UR
	93306-082Y2	BEARING	1				UR
30	90179-10803	NUT	1				
31	1LB-E7649-00	SPACER	1				
32	93210-28803	O-RING	2				



1PN1431-M140

FIG. 14 TRANSMISSION

REF. NO.	PART NO.	DESCRIPTION	2BR1				REMARKS
1	44D-E7410-00	MAIN AXLE COMP.(12T/42T)	1				
2	93306-302YF	BEARING	1				UR
	93306-301XT	BEARING	1				UR
3	93306-301YS	BEARING	1				
4	1LB-E7421-00	AXLE, DRIVE	1				
5	44D-E7211-00	GEAR, 1ST WHEEL (45T)	1				
6	93306-272X2	BEARING	1				
7	93102-32801	OIL SEAL	1				
8	99009-25400	CIRCLIP	1				
9	90208-25802	WASHER, CONICAL SPRING	1				
10	44D-E6111-00	GEAR, PRIMARY DRIVE (16T)	1				
11	93306-252XB	BEARING	1				UR
12	93306-303YJ	BEARING	2				UR
	93306-303YE	BEARING	2				UR
13	93102-17812	OIL SEAL	1				

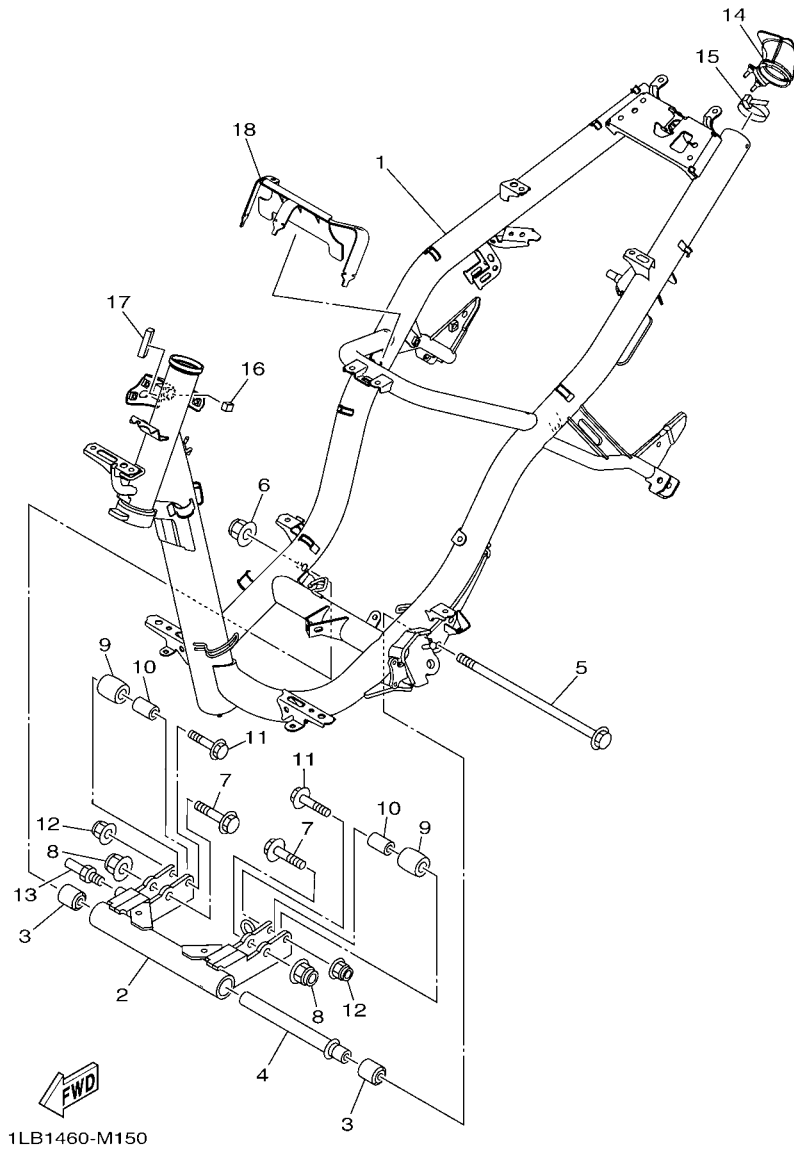


FIG. 15 FRAME

REF. NO.	PART NO.	DESCRIPTION	2BR1				REMARKS
1	2BR-F1110-00	FRAME COMP.	1				
2	2BR-F1410-00	ENGINE BRACKET COMP.	1				
3	90388-10801	DAMPER	2				
4	44P-F1459-00	SPACER	1				
5	5P0-F2141-00	SHAFT, PIVOT	1				
6	95602-10200	NUT, U FLANGE	1				
7	90105-10283	BOLT, FLANGE	2				
8	95602-10200	NUT, U FLANGE	2				
9	5P2-F7114-00	STOPPER, MAIN STAND	2				
10	90387-08821	COLLAR	2				
11	90105-088E3	BOLT, FLANGE	2				
12	95602-08200	NUT, SELF-LOCKING	2				
13	33S-F7435-00	BOLT	1				
14	44P-F117F-00	COVER	1				
15	90464-50801	CLAMP	1				
16	90520-08800	DAMPER, PLATE	1				
17	90520-08803	DAMPER, PLATE	1				
18	2BR-F117G-00	PROTECTOR	1				

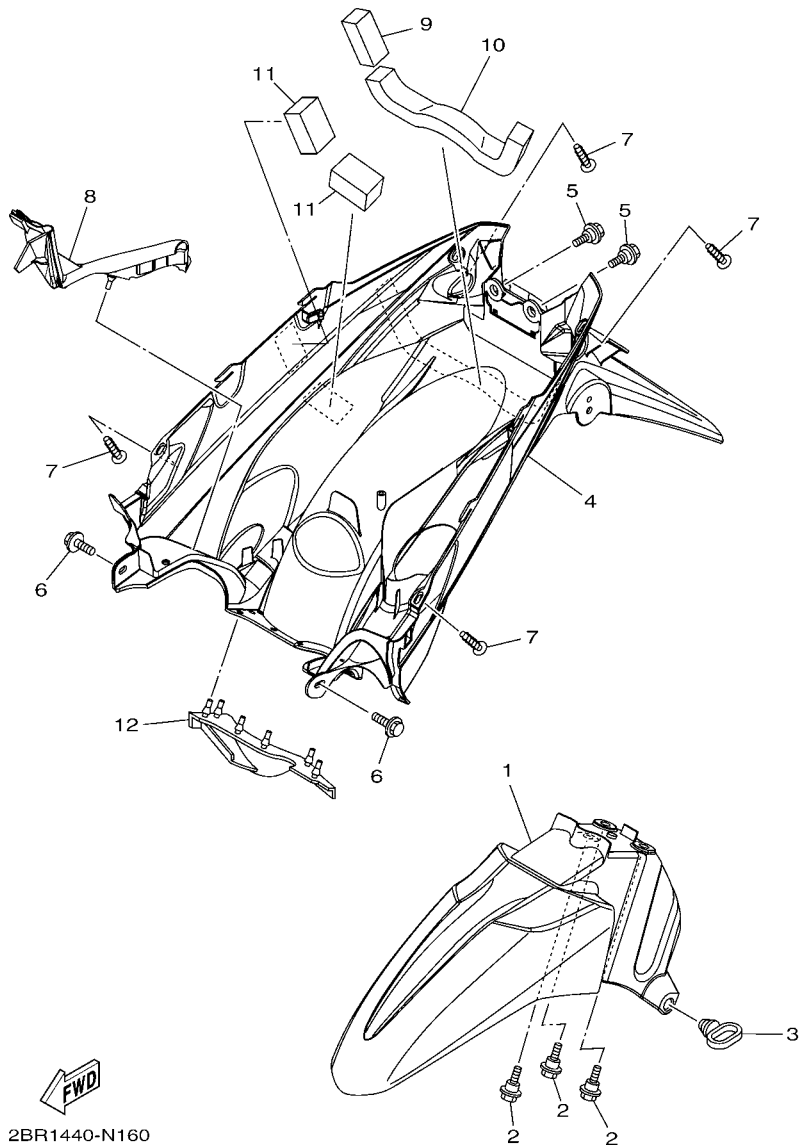


FIG. 16 FENDER

REF. NO.	PART NO.	DESCRIPTION	2BR1			REMARKS
1	44P-F1511-00-P5	FENDER, FRONT	1			UR FOR DRMK
	44P-F1511-00-P4	FENDER, FRONT	1			UR FOR SMX
	44P-F1511-00-P6	FENDER, FRONT	1			UR FOR RYC1
2	90109-06887	BOLT	3			
3	15K-F1518-00	HOLDER, CABLE	1			
4	2BR-F1611-00	FENDER, REAR	1			
5	90109-06887	BOLT	2			
6	90119-06044	BOLT, WITH WASHER	2			
7	97707-50014	SCREW, TRUSS HEAD TAPPING	4			
8	2BR-F1652-00	PROTECTOR	1			
9	90520-20813	DAMPER, PLATE	1			
10	90520-20814	DAMPER, PLATE	1			
11	90520-20002	DAMPER, PLATE	2			
12	44P-F1621-00	FLAP	1			

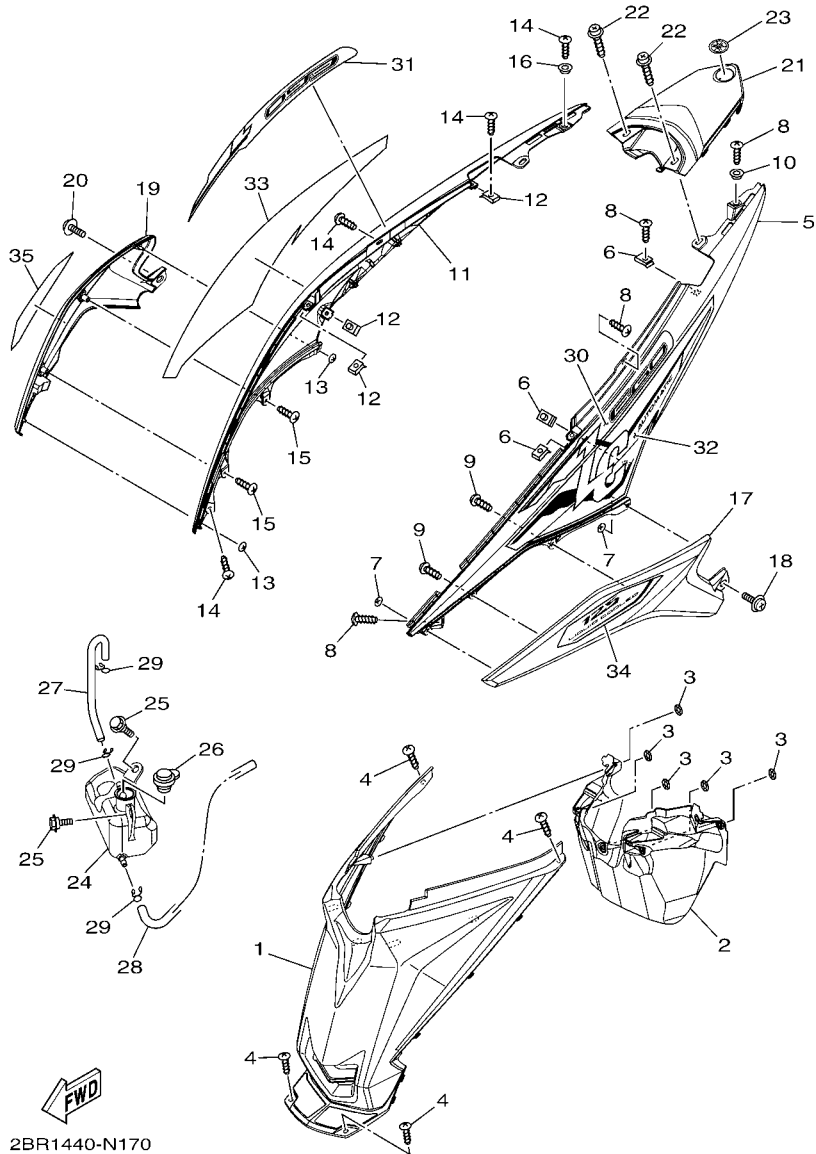


FIG. 17 SIDE COVER

REF. NO.	PART NO.	DESCRIPTION	2BR1			REMARKS
1	2BR-F172W-00	COVER	1			
2	2BR-F177F-00	COVER	1			
3	90183-06815	NUT, SPRING	5			
4	97707-50014	SCREW, TRUSS HEAD TAPPING	4			
5	44P-F1711-00-P5	COVER, SIDE 1	1			UR FOR DRMK
	44P-F1711-00-P4	COVER, SIDE 1	1			UR FOR SMX
	44P-F1711-00-P6	COVER, SIDE 1	1			UR FOR RYC1
6	90183-05807	NUT, SPRING	3			
7	90183-04005	NUT, SPRING	2			
8	97707-50014	SCREW, TRUSS HEAD TAPPING	4			
9	97707-50012	SCREW, TRUSS HEAD TAPPING	2			
10	90387-058M9	COLLAR	1			
11	44P-F1721-00-P5	COVER, SIDE 2	1			UR FOR DRMK
	44P-F1721-00-P4	COVER, SIDE 2	1			UR FOR SMX
	44P-F1721-00-P6	COVER, SIDE 2	1			UR FOR RYC1
12	90183-05807	NUT, SPRING	3			
13	90183-04005	NUT, SPRING	2			
14	97707-50014	SCREW, TRUSS HEAD TAPPING	4			
15	97707-50012	SCREW, TRUSS HEAD TAPPING	2			
16	90387-058M9	COLLAR	1			
17	2BR-F1731-00-P0	COVER, SIDE 3	1			SMX FOR DRMK,RYC1
	2BR-F1731-00-P1	COVER, SIDE 3	1			MBL2 FOR SMX
18	90159-06801	SCREW, WITH WASHER	1			
19	2BR-F1741-00-P0	COVER, SIDE 4	1			SMX FOR DRMK,RYC1
	2BR-F1741-00-P1	COVER, SIDE 4	1			MBL2 FOR SMX
20	90159-06801	SCREW, WITH WASHER	1			
21	44P-F171E-00-P1	COVER, SIDE 5	1			UR BWC1 FOR DRMK

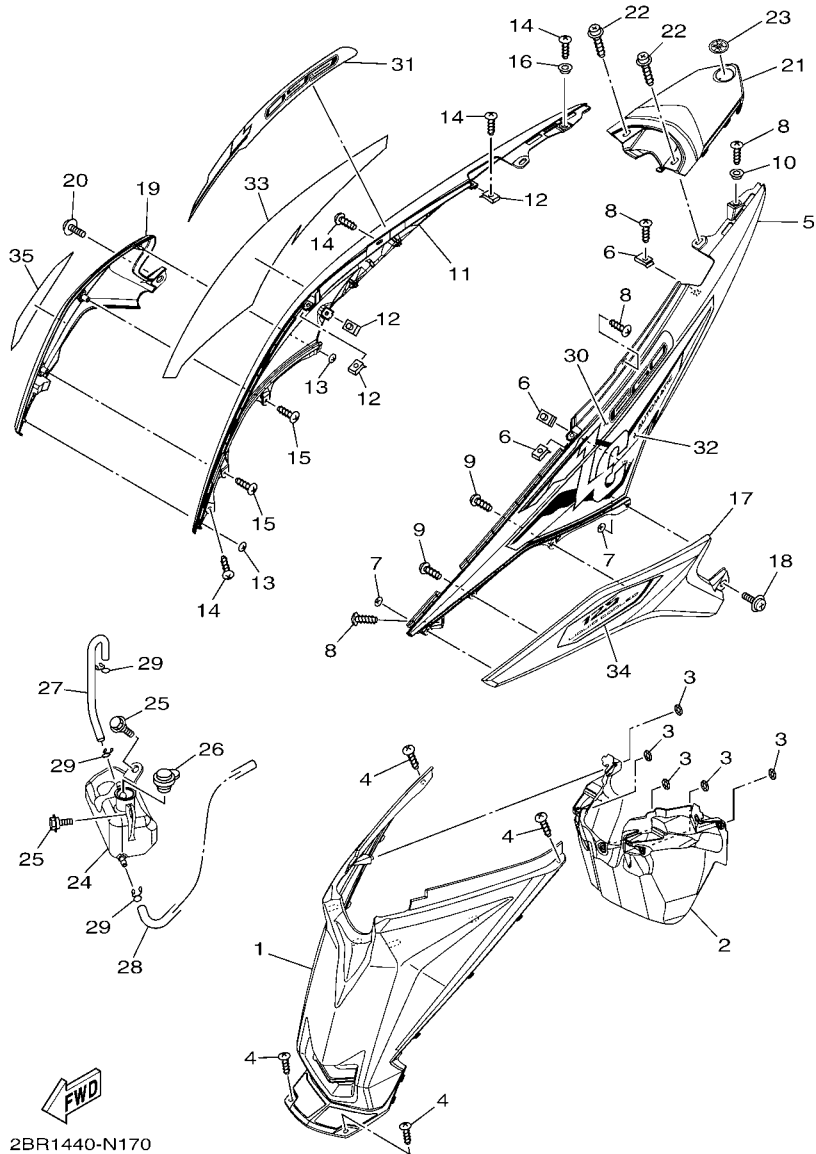
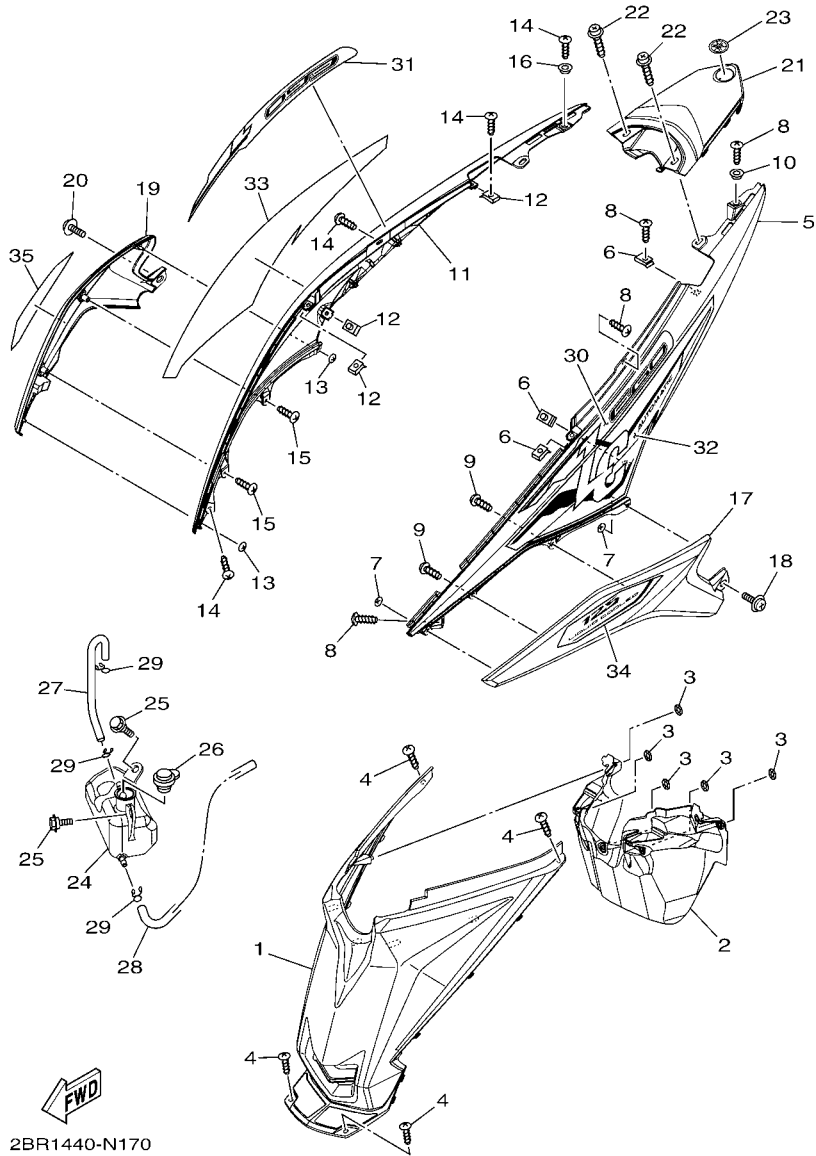


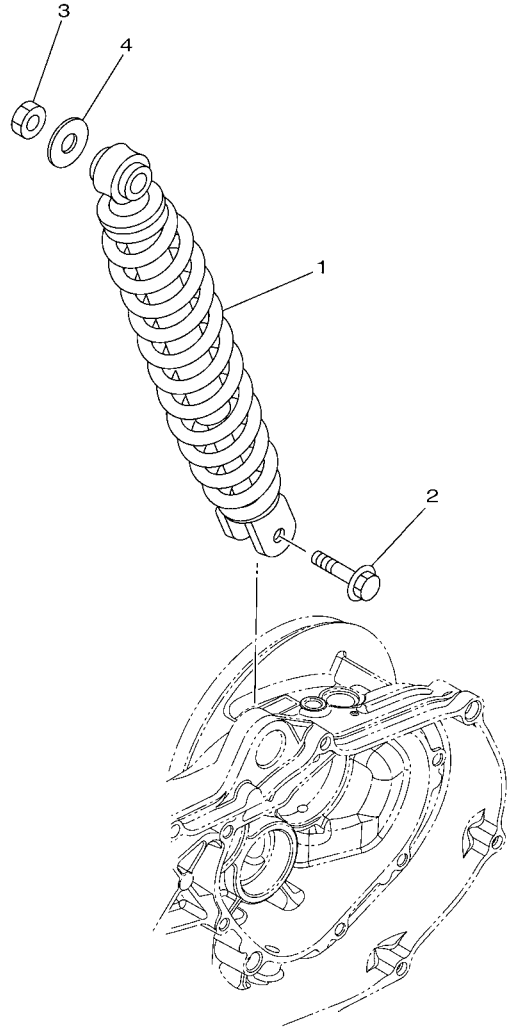
FIG. 17 SIDE COVER

REF. NO.	PART NO.	DESCRIPTION	2BR1			REMARKS
21	44P-F171E-00-P5	COVER, SIDE 5	1			UR MT1 FOR SMX
	44P-F171E-00-P4	COVER, SIDE 5	1			UR SMX FOR RYC1
22	90159-06067	SCREW, WITH WASHER	2			
23	5P2-F1737-00	EMBLEM	1			
24	44P-F1871-00	TANK, RECOVERY	1			
25	90109-06887	BOLT	2			
26	5YP-F1875-00	CAP	1			
27	44P-F1816-00	PIPE 1	1			
28	44P-F1817-00	PIPE 2	1			
29	90467-08003	CLIP	3			
30	2BR-F173E-00	GRAPHIC 1	1			UR FOR DRMK
	2BR-F173E-10	GRAPHIC 1	1			UR FOR SMX
	2BR-F173E-20	GRAPHIC 1	1			UR FOR RYC1
31	2BR-F173F-00	GRAPHIC 2	1			UR FOR DRMK
	2BR-F173F-10	GRAPHIC 2	1			UR FOR SMX
	2BR-F173F-20	GRAPHIC 2	1			UR FOR RYC1
32	2BR-F174G-00	GRAPHIC 3	1			UR FOR DRMK
	2BR-F174G-10	GRAPHIC 3	1			UR FOR SMX
	2BR-F174G-20	GRAPHIC 3	1			UR FOR RYC1
33	2BR-F174H-00	GRAPHIC 4	1			UR FOR DRMK
	2BR-F174H-10	GRAPHIC 4	1			UR FOR SMX
	2BR-F174H-20	GRAPHIC 4	1			UR FOR RYC1
34	2BR-F174J-00	GRAPHIC 5	1			UR FOR DRMK
	2BR-F174J-10	GRAPHIC 5	1			UR FOR SMX
	2BR-F174J-20	GRAPHIC 5	1			UR FOR RYC1
35	2BR-F174K-00	GRAPHIC 6	1			UR FOR DRMK
	2BR-F174K-10	GRAPHIC 6	1			UR FOR SMX

FIG. 17 SIDE COVER



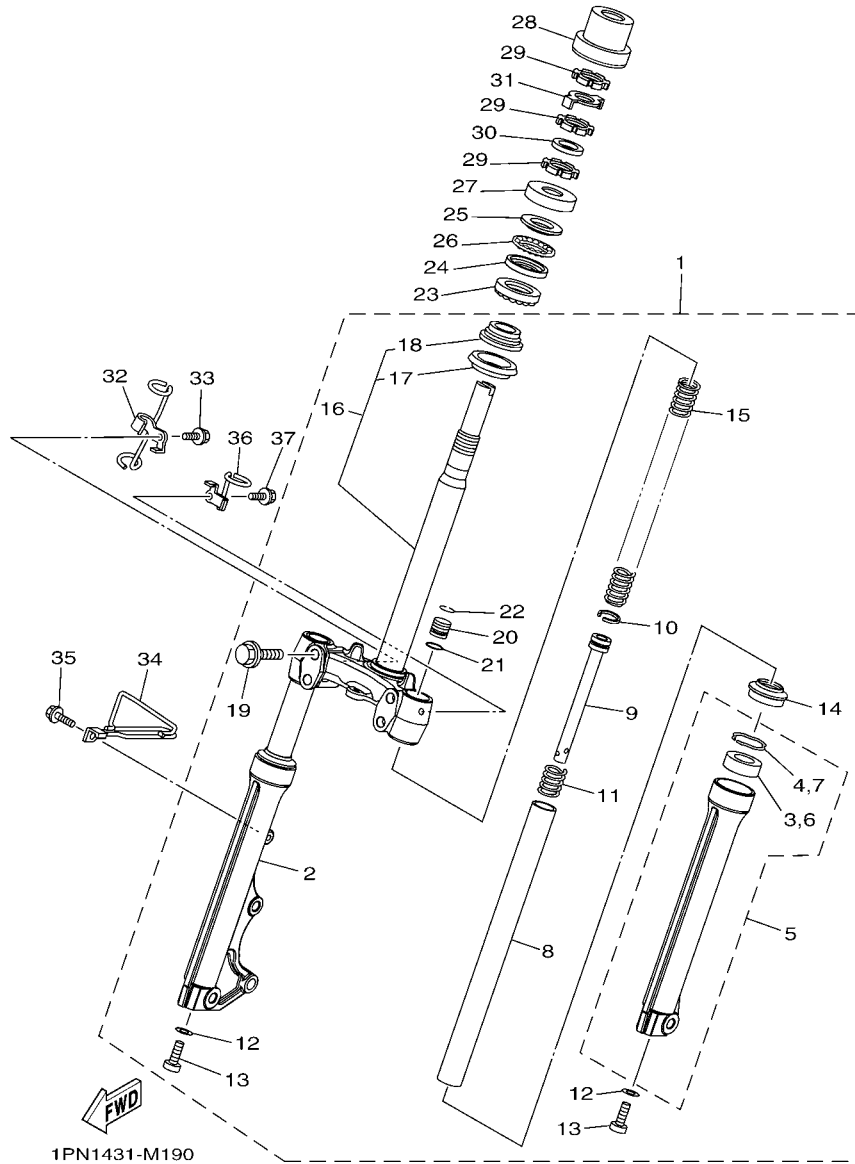
REF. NO.	PART NO.	DESCRIPTION	2BR1		REMARKS
35	2BR-F174K-20	GRAPHIC 6	1		UR FOR RYC1



1PN1431-M180

FIG. 18 REAR ARM & SUSPENSION

REF. NO.	PART NO.	DESCRIPTION	2BR1				REMARKS
1	2BR-F2210-00	SHOCK ABSORBER ASSY, REAR	1				
2	90105-088E8	BOLT, FLANGE	1				
3	95302-10600	NUT	1				
4	90201-10065	WASHER, PLATE	1				



1PN1431-M190

FIG. 19 STEERING

REF. NO.	PART NO.	DESCRIPTION	2BR1				REMARKS
1	2BR-F3100-00	FRONT FORK ASSY	1				
2	2BR-F3136-00	.TUBE, OUTER	1				
3	4XC-F3145-00	..OIL SEAL	1				
4	5P0-F3156-00	..RING, SNAP	1				
5	2BR-F3126-00	.TUBE, OUTER (L.H)	1				
6	4XC-F3145-00	..OIL SEAL	1				
7	5P0-F3156-00	..RING, SNAP	1				
8	1PN-F3110-00	.INNER TUBE COMP.1	2				
9	33S-F3170-00	.CYLINDER COMP., FRONT FORK	2				
10	2JG-F3157-00	.RING, PISTON	2				
11	5HV-F3152-00	.SPRING, SUB	2				
12	509-F3158-L0	.GASKET	2				
13	31B-F3181-00	.BOLT, HEXAGON SOCKET HEAD	2				
14	4XC-F3144-00	.SEAL, DUST	2				
15	1PN-F3141-00	.SPRING, FRONT FORK	2				
16	44P-F3340-00	..UNDER BRACKET COMP.	1				
17	29B-F3462-00	..SEAL, DUST	1				
18	5BP-F3875-00	..BEARING, STEERING LOWER	1				
19	4D0-F3346-00	.BOLT 1	4				
20	31B-F3111-00	.BOLT, CAP	2				
21	2JG-F3147-00	.O-RING	2				
22	31B-F3153-00	.RING, SNAP	2				
23	5BP-F3873-01	BEARING, STEERING UPPER	1				
24	22F-23412-01	RACE, BALL 2	1				
25	22F-23411-01	RACE, BALL 1	1				
26	22F-2341E-00	RETAINER, BALL BEARING	1				
27	3AY-F3416-00	COVER, BALL RACE 2	1				

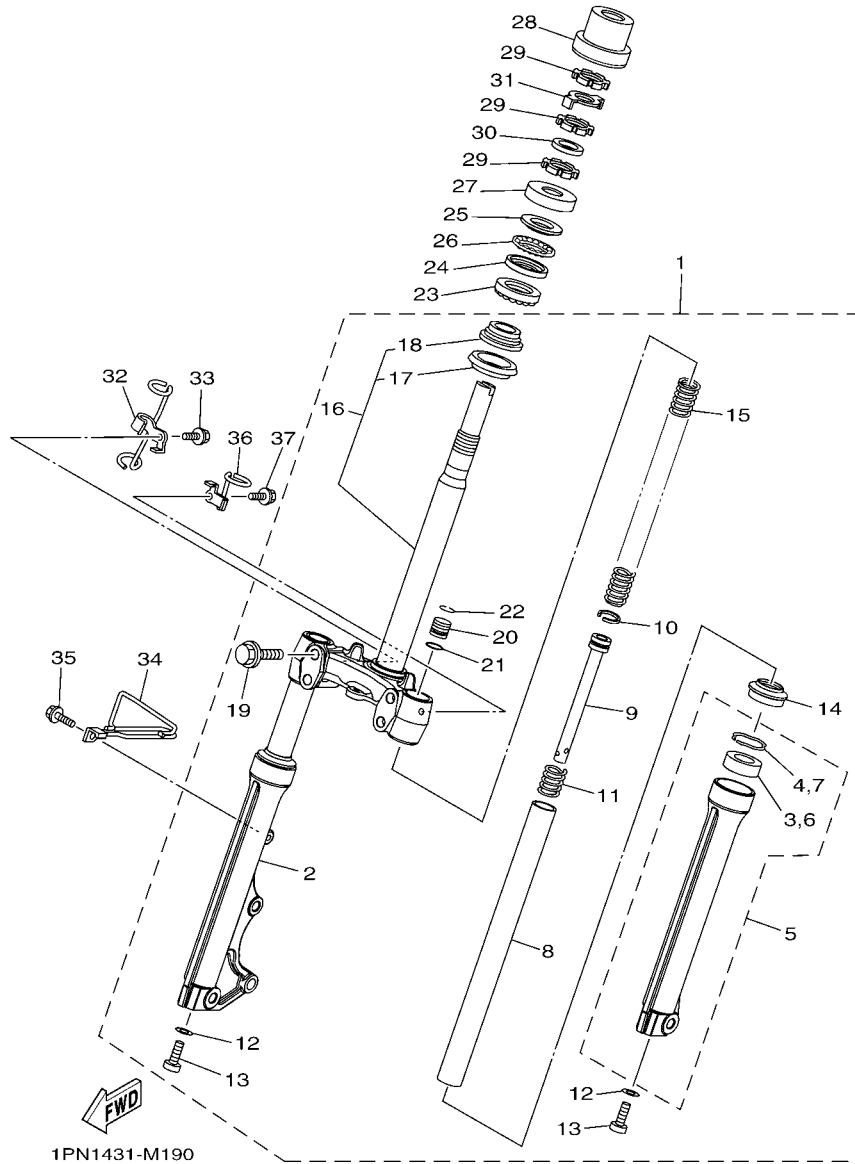


FIG. 19 STEERING

REF. NO.	PART NO.	DESCRIPTION	2BR1				REMARKS
28	2BR-F3415-00	COVER, BALL RACE 1	1				
29	90179-25810	NUT	3				
30	90202-26142	WASHER, PLATE	1				
31	2BR-F3418-00	WASHER, SPECIAL	1				
32	2BR-F5875-00	HOLDER, BRAKE HOSE 1	1				
33	95022-06010	BOLT, FLANGE	1				
34	2BR-F5876-00	HOLDER, BRAKE HOSE 2	1				
35	95022-06010	BOLT, FLANGE	1				
36	44P-F1161-00	HOLDER, CABLE	1				
37	95022-06010	BOLT, FLANGE	1				

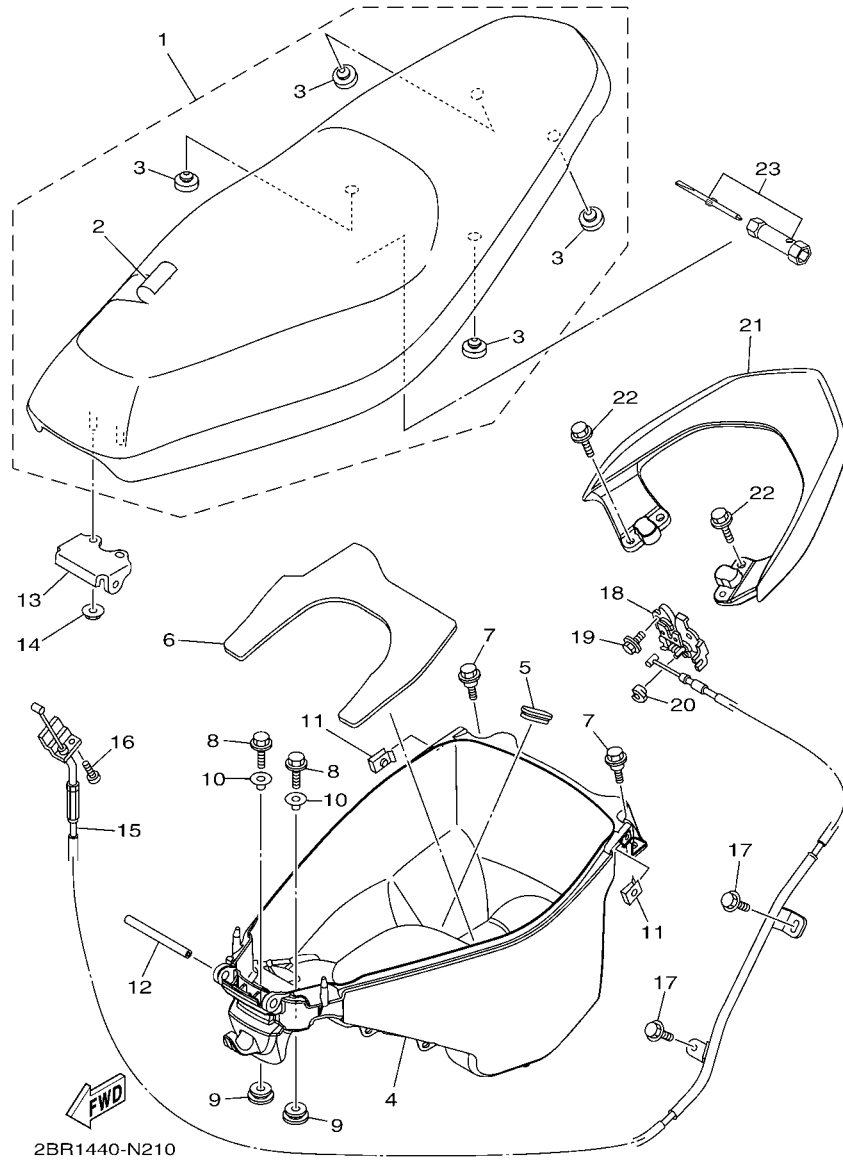
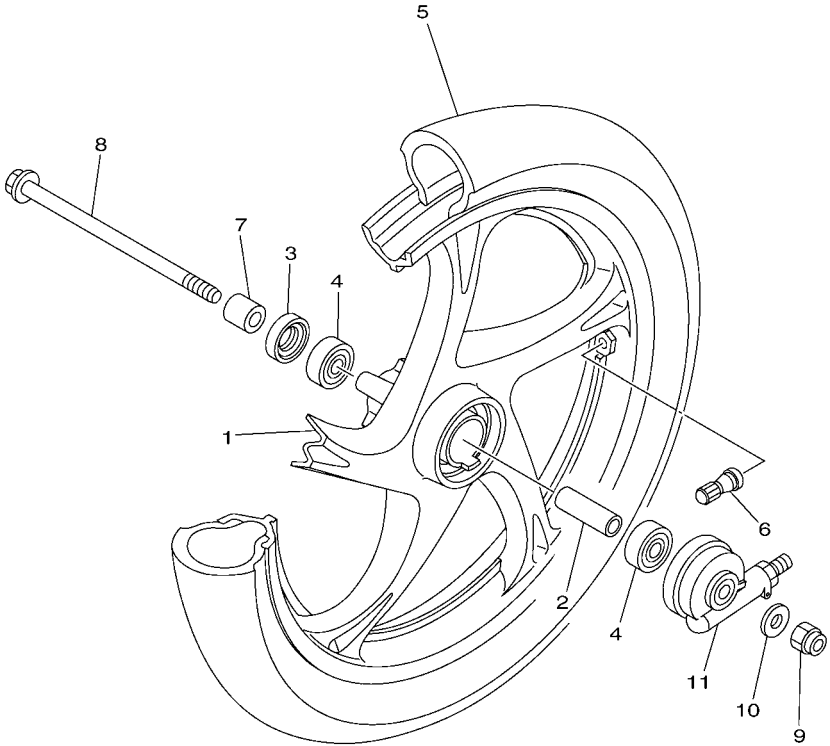


FIG. 21 SEAT

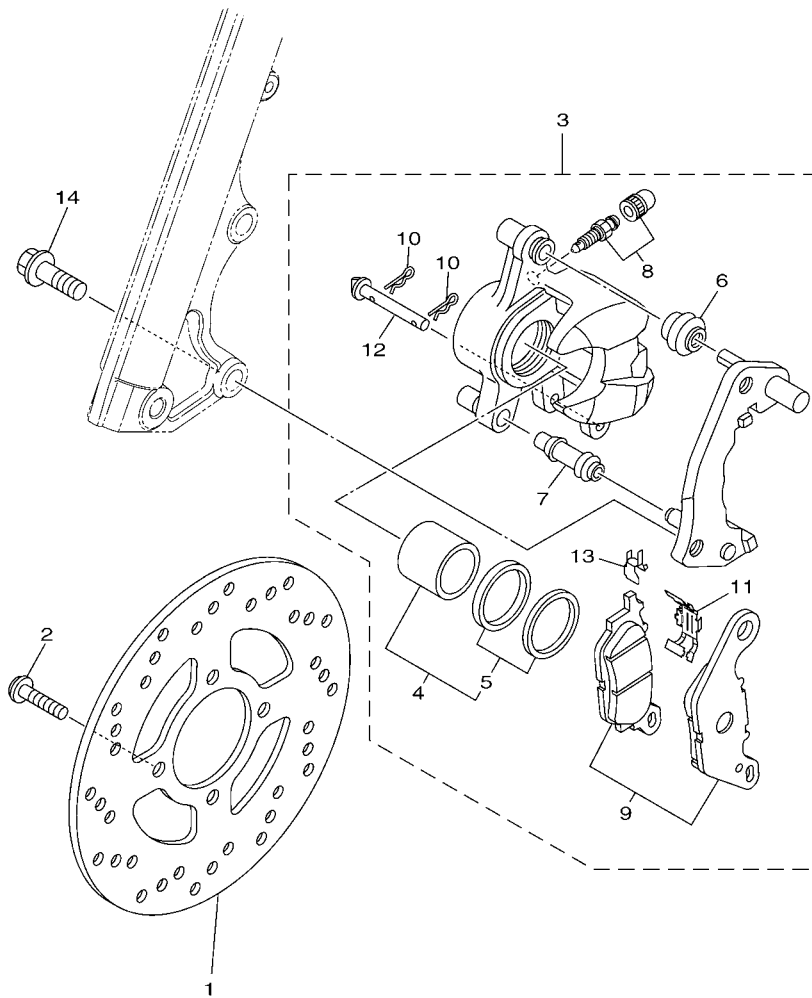
REF. NO.	PART NO.	DESCRIPTION	2BR1				REMARKS
1	44P-F4730-00	DOUBLE SEAT ASSY	1				
2	44P-F470F-00	.SEAT COVER COMP.	1				
3	44P-F4741-00	.PAD, SEAT	4				
4	44P-F473R-00	BOX 1	1				
5	5VW-F6199-00	PLUG, BLIND	1				
6	44P-F4747-00	DAMPER, SEAT	1				
7	90109-06887	BOLT	2				
8	95822-06020	BOLT, FLANGE	2				
9	90480-14823	GROMMET	2				
10	90387-068G3	COLLAR	2				
11	90183-05807	NUT, SPRING	2				
12	5VV-F4727-00	PIN, SEAT FITTING	1				
13	5VW-F4726-00	HINGE, SEAT	1				
14	95702-06500	NUT, FLANGE	2				
15	44P-F478E-01	CABLE, SEAT LOCK	1				
16	98502-05010	SCREW, PAN HEAD	1				
17	95022-06012	BOLT, FLANGE	2				
18	5P0-F4780-01	SEAT LOCK ASSY	1				
19	95022-06010	BOLT, FLANGE	2				
20	1S8-F4768-00	STOPPER	1				
21	44P-F4773-00-P0	HANDLE, SEAT	1				SMX
22	95822-06016	BOLT, FLANGE	4				
23	44P-F8100-00	TOOL KIT	1				

FIG. 22 FRONT WHEEL

REF. NO.	PART NO.	DESCRIPTION	2BR1				REMARKS
1	5VW-F5168-01-0X	CAST WHEEL, FRONT	1				YB
2	90560-10292	SPACER	1				
3	93106-20808	OIL SEAL	1				
4	93306-300X8	BEARING	2				
5	94107-14808	TIRE (70/90-14M/C 34P N)	1				KENDA
6	93900-00817	VALVE, RIM (TR412)	1				
7	90387-10837	COLLAR	1				
8	3NA-F5181-01	AXLE, WHEEL	1				
9	90185-10811	NUT, SELF-LOCKING	1				
10	90201-10831	WASHER, PLATE	1				
11	5VV-F5190-01	GEAR UNIT ASSY	1				



 44P1440-K230



2BR1440-N230

FIG. 23 FRONT BRAKE CALIPER

REF. NO.	PART NO.	DESCRIPTION	2BR1				REMARKS
1	5TL-F582U-10	DISK, BRAKE (RIGHT)	1				
2	90111-08853	BOLT,HEX. SOCKET BUTTON	4				
3	54P-F580U-01	CALIPER ASSY (RIGHT)	1				
4	5P0-F5802-00	.PISTON ASSY, CALIPER	1				
5	5YP-F5803-50	..CALIPER SEAL KIT	1				
6	5YP-F5917-00	.BOOT, CALIPER	1				
7	5YP-F5937-00	.BOOT 2	1				
8	4C9-W0048-00	.BLEED SCREW KIT	1				
9	3C1-F5805-10	.BRAKE PAD KIT	1				
10	5YP-F5925-01	.CLIP	2				
11	5P0-F5919-00	.SUPPORT, PAD	1				
12	5YP-F5924-00	.PIN, PAD	1				
13	5YP-F5939-00	.CLIP, PAD	1				
14	90105-10831	BOLT, FLANGE	2				

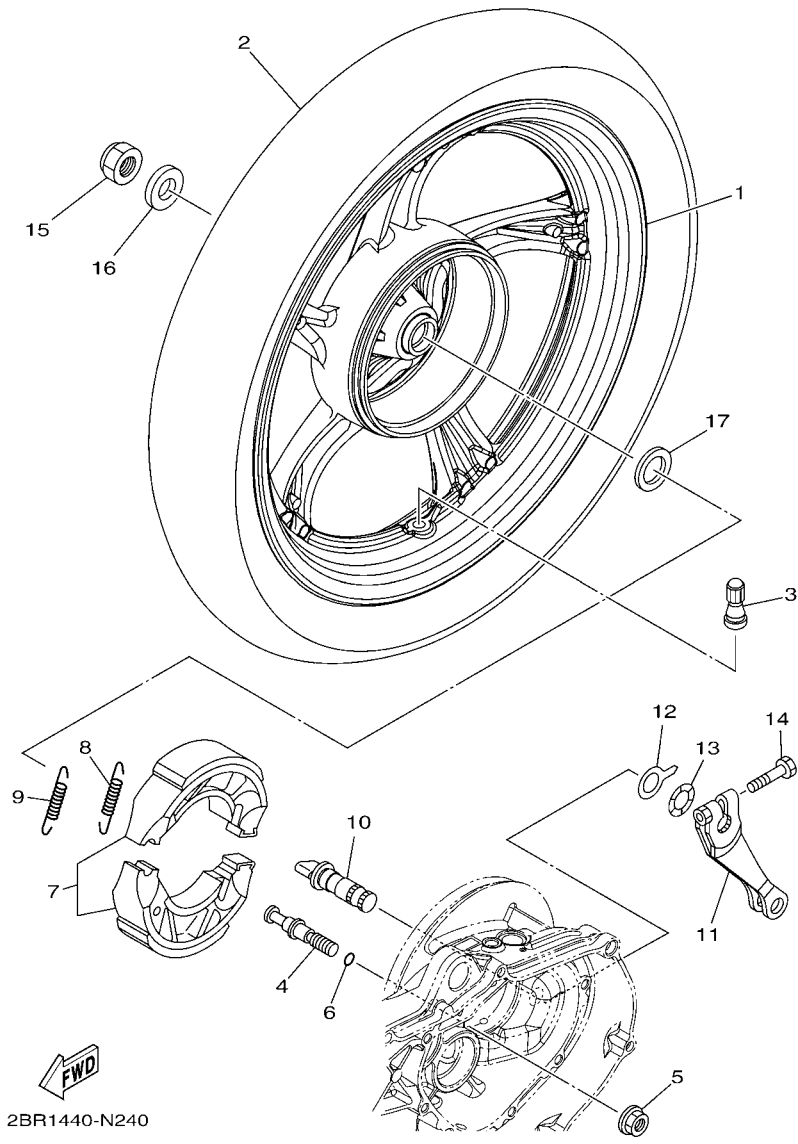


FIG. 24 REAR WHEEL

REF. NO.	PART NO.	DESCRIPTION	2BR1				REMARKS
1	44P-F5338-00-0X	CAST WHEEL, REAR	1				YB
2	94109-14804	TIRE(90/80-14M/C 49P REINF N)	1				KENDA
3	93900-00817	VALVE, RIM (TR412)	1				
4	5LW-F5326-01	PIN, PIVOT	1				
5	95702-10500	NUT, FLANGE	1				
6	93210-07802	O-RING	1				
7	5YP-F530K-00	BRAKE SHOE SET	1				
8	90506-12001	SPRING, TENSION	1				
9	90506-15001	SPRING, TENSION	1				
10	10C-F5351-00	CAMSHAFT	1				
11	5P2-F5355-00	LEVER, CAMSHAFT	1				
12	5LW-F533A-00	PLATE, INDICATOR	1				
13	90206-14802	WASHER, WAVE	1				
14	90101-06046	BOLT	1				
15	90185-16800	NUT, SELF-LOCKING	1				
16	90201-16810	WASHER, PLATE	1				
17	90201-220J8	WASHER, PLATE	1				

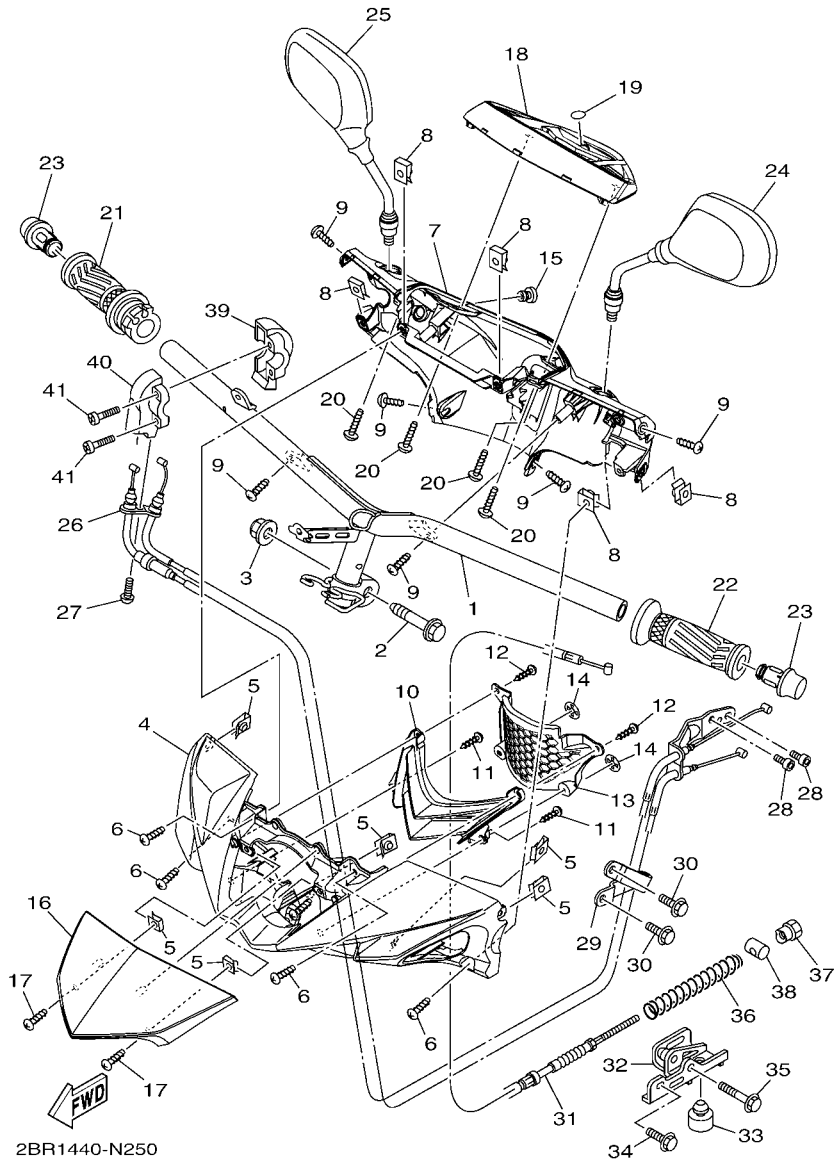


FIG. 25 STEERING HANDLE & CABLE

REF. NO.	PART NO.	DESCRIPTION	2BR1				REMARKS
1	2BR-F6110-00	HANDLE COMP.	1				
2	90105-10036	BOLT, FLANGE	1				
3	90185-10815	NUT, SELF-LOCKING	1				
4	2BR-F6143-00-P0	COVER, HANDLE UPPER 1	1				SMX
5	90183-05807	NUT, SPRING	6				
6	97707-50014	SCREW, TRUSS HEAD TAPPING	4				
7	2BR-F6145-00	COVER, HANDLE UPPER 2	1				
8	90183-05807	NUT, SPRING	5				
9	97707-50014	SCREW, TRUSS HEAD TAPPING	6				
10	2BR-F6231-00	COVER, HANDLE FRONT 1	1				
11	97707-40008	SCREW, TAPPING	2				
12	97707-50014	SCREW, TRUSS HEAD TAPPING	2				
13	2BR-F6216-00	CAP, HANDLEBAR COVER	1				
14	90183-04005	NUT, SPRING	2				
15	1S8-F6199-00	PLUG, BLIND	1				
16	2BR-F61AA-00-P0	VISOR	1				UR BWC1 FOR DRMK
	2BR-F61AA-00-P1	VISOR	1				UR MT1 FOR SMX
	2BR-F61AA-00-P2	VISOR	1				UR FOR RYC1
17	97707-50014	SCREW, TRUSS HEAD TAPPING	2				
18	2BR-H3559-00-P0	COVER, METER	1				DBNM8
19	5P0-F3108-00	TUNING FORK MARK	1				
20	97702-50020	SCREW, TAPPING	4				
21	44P-F6240-00	GRIP ASSY	1				
22	44P-F6241-00	GRIP	1				
23	1VB-F6246-00	END, GRIP	2				
24	5LW-F6280-10	REAR VIEW MIRROR ASSY (LEFT)	1				
25	5LW-F6290-10	REAR VIEW MIRROR ASSY (RIGHT)	1				

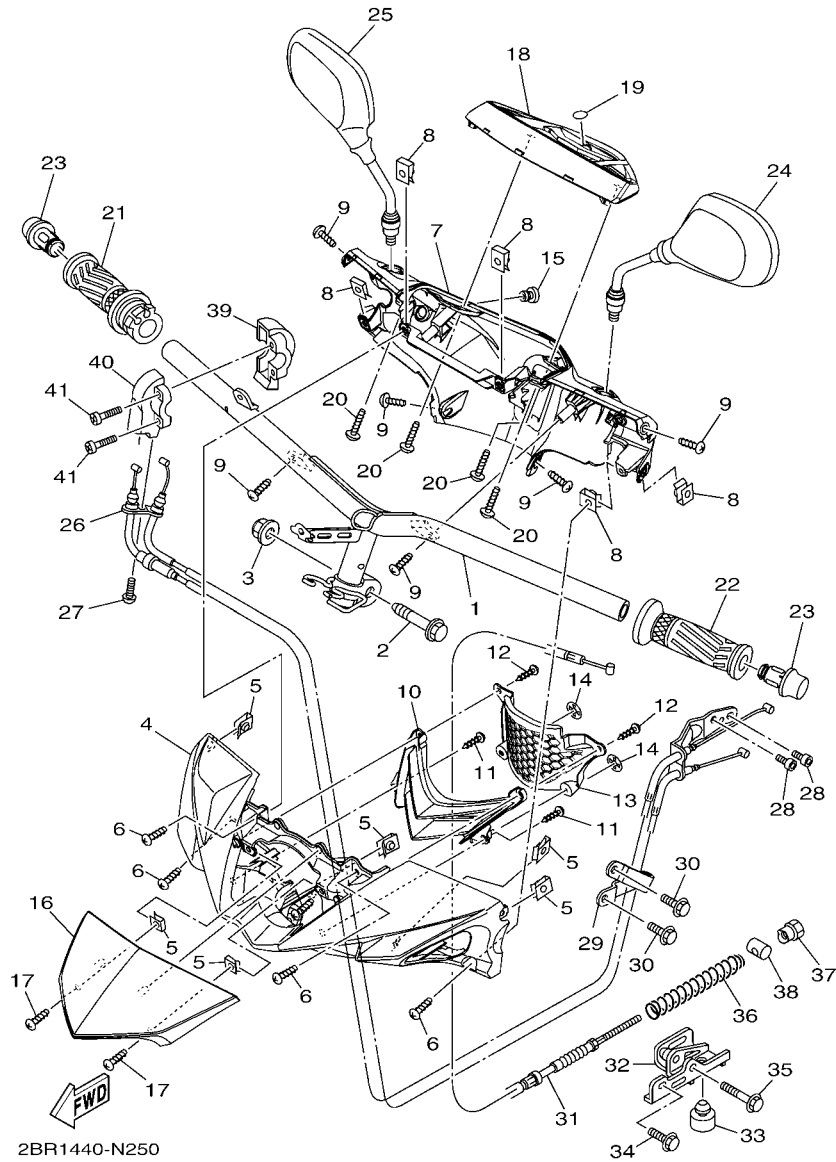
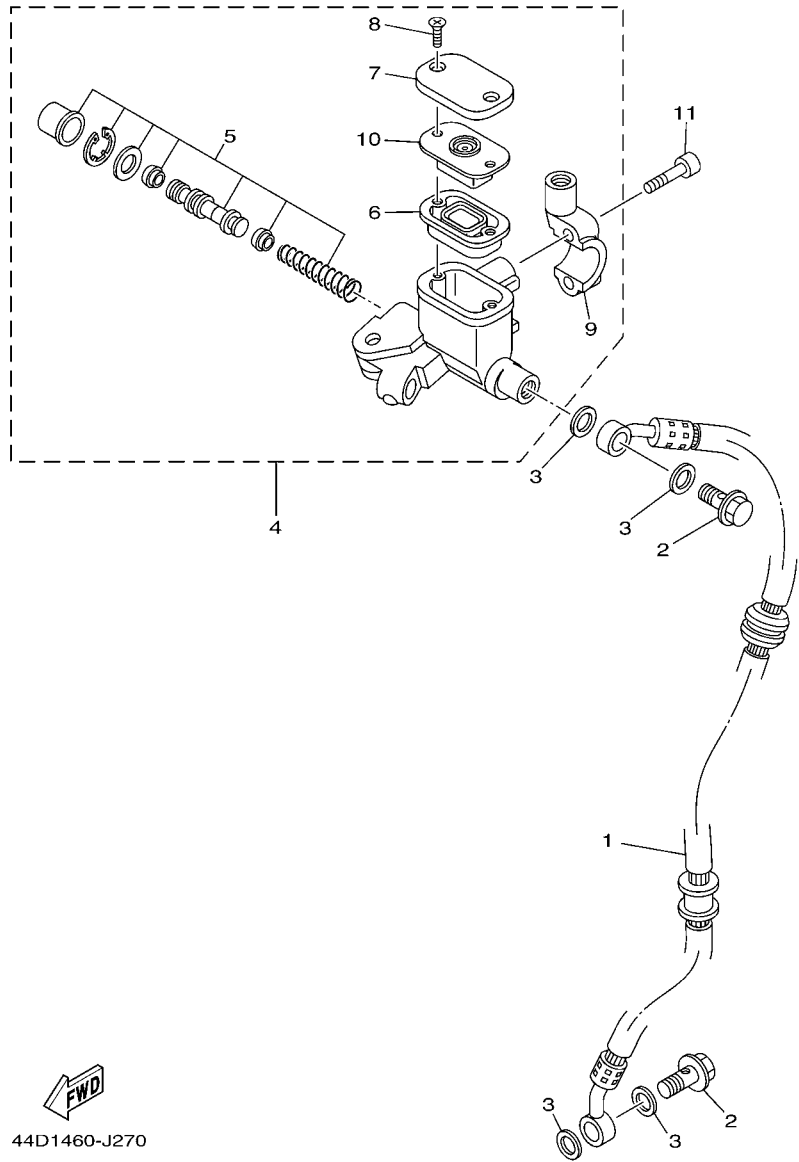


FIG. 25 STEERING HANDLE & CABLE

REF. NO.	PART NO.	DESCRIPTION	2BR1				REMARKS
26	2BR-F6301-00	THROTTLE CABLE ASSY	1				
27	92017-05016	BOLT, BUTTON HEAD	1				
28	91312-05008	BOLT	2				
29	2BR-F6279-00	GUIDE, CABLE	1				
30	95022-06012	BOLT, FLANGE	2				
31	44P-F6351-00	CABLE, BRAKE	1				
32	44P-F637G-00	HOLDER, WIRE	1				
33	5VW-F7214-00	STOPPER	1				
34	95022-06014	BOLT, FLANGE	1				
35	95022-06030	BOLT, FLANGE	1				
36	90501-16801	SPRING, COMPRESSION	1				
37	90179-06835	NUT	1				
38	90249-12008	PIN	1				
39	5P2-F6281-00	CAP, GRIP UPPER	1				
40	5P2-F6282-00	CAP, GRIP UNDER	1				
41	98502-05025	SCREW, PAN HEAD	2				



44D1460-J270

FIG. 26 FRONT MASTER CYLINDER

REF. NO.	PART NO.	DESCRIPTION	2BR1				REMARKS
1	1PN-F5872-00	HOSE, BRAKE 1	1				
2	90401-10159	BOLT, UNION	2				
3	90201-10118	WASHER, PLATE	4				
4	5P0-F583T-13	MASTER CYLINDER ASSY (BLACK)	1				
5	5P0-W0041-00	.CYLINDER KIT, MASTER	1				
6	5P0-F5854-00	.DIAPHRAGM, RESERVOIR	1				
7	5P0-F5852-10	.CAP, RESERVOIR (BLACK)	1				
8	36Y-2589H-00	.SCREW	2				
9	5TL-F5867-11	.BRACKET, MASTER CYLINDER (BLACK)	1				
10	5P0-F5855-00	.BUSH, DIAPHRAGM	1				
11	91312-06025	BOLT	2				

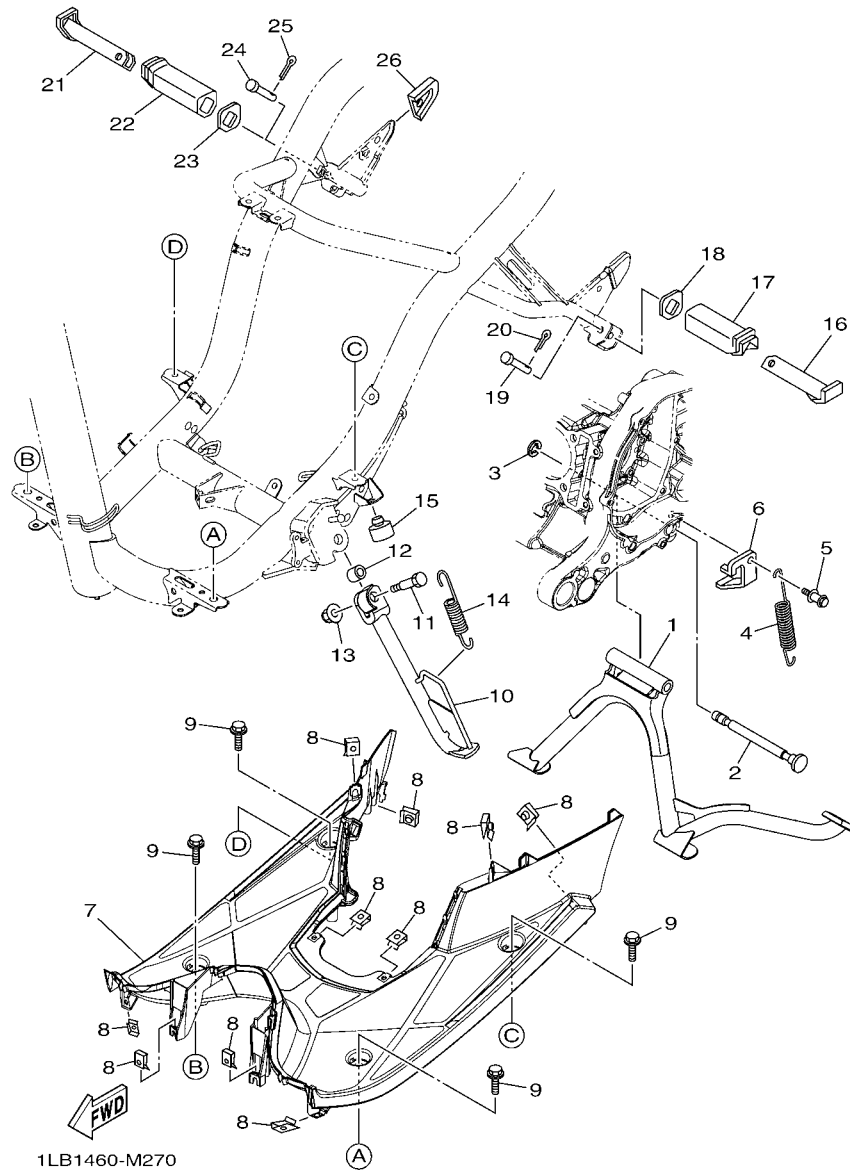
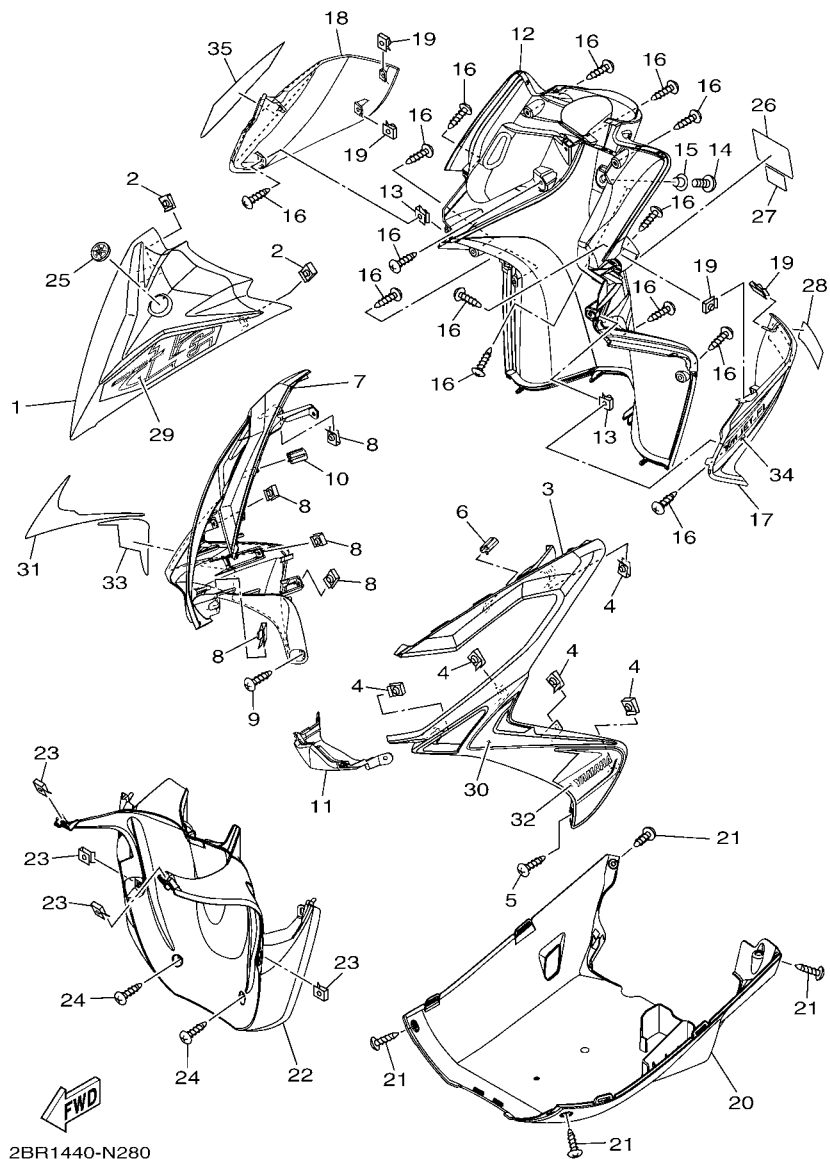


FIG. 27 STAND & FOOTREST

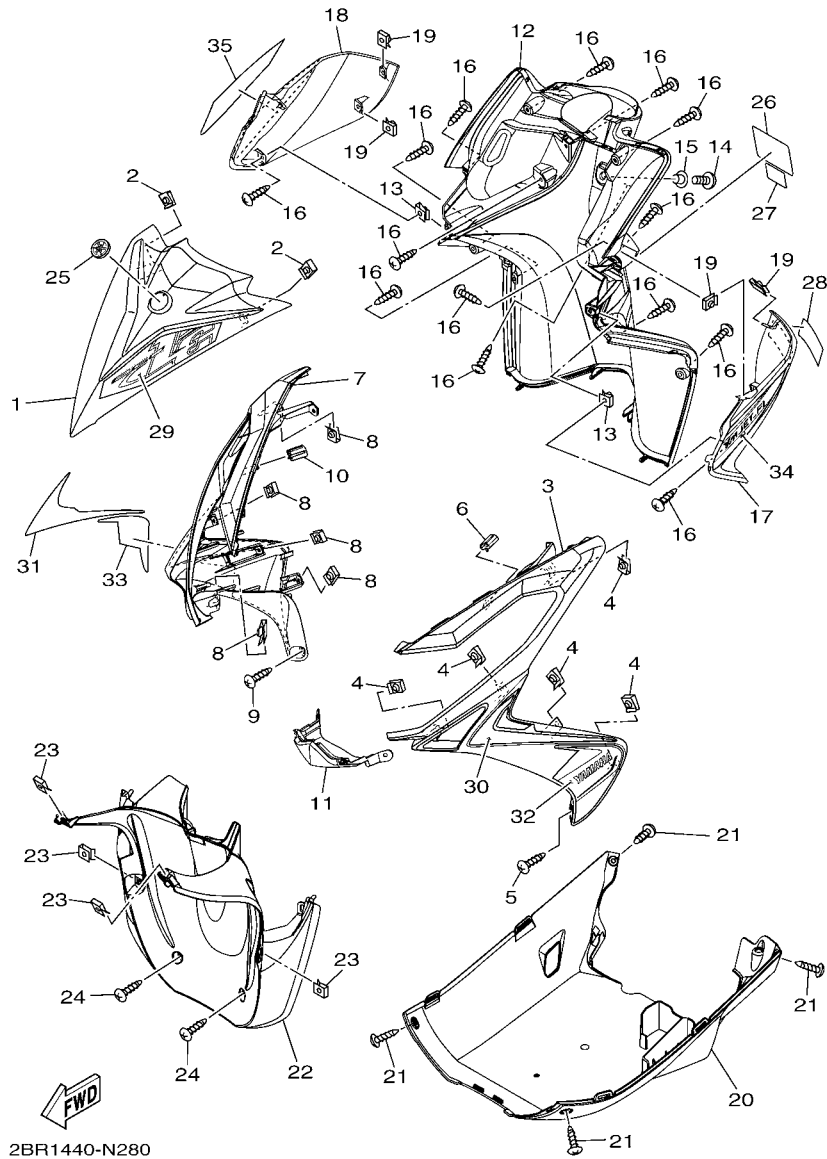
REF. NO.	PART NO.	DESCRIPTION	2BR1				REMARKS
1	2BR-F7111-00	STAND, MAIN	1				
2	33S-F7112-00	SHAFT, MAIN STAND	1				
3	93430-08810	CIRCLIP	1				
4	90506-35816	SPRING, TENSION	1				
5	1LB-F7254-00	HOOK	1				
6	44P-F7267-01	GUIDE, WIRE	1				
7	44P-F7481-01	BOARD, FOOTREST	1				
8	90183-05807	NUT, SPRING	10				
9	90119-06044	BOLT, WITH WASHER	4				
10	2BR-F7311-00	STAND, SIDE	1				
11	90101-08847	BOLT	1				
12	90387-08820	COLLAR	1				
13	95602-08200	NUT, SELF-LOCKING	1				
14	5P2-F7116-00	SPRING, MAIN STAND	1				
15	5VW-F7214-00	STOPPER	1				
16	5BU-F7431-00	FOOTREST, REAR 1	1				
17	5BU-F7433-00	COVER, REAR FOOTREST	1				
18	5BU-F7445-00	PLATE 1	1				
19	91701-08035	PIN	1				
20	90252-23800	PIN, COTTER	1				
21	5BU-F7441-00	FOOTREST, REAR 2	1				
22	5BU-F7444-00	COVER, REAR FOOTREST	1				
23	5BU-F7445-00	PLATE 1	1				
24	91701-08035	PIN	1				
25	90252-23800	PIN, COTTER	1				
26	44P-F7491-00	PROTECTOR	1				



2BR1440-N280

FIG. 28 LEG SHIELD

REF. NO.	PART NO.	DESCRIPTION	2BR1			REMARKS
1	2BR-F3391-00-P0	PANEL, FRONT	1			UR BWC1 FOR DRMK
	2BR-F3391-00-P1	PANEL, FRONT	1			UR MBL2 FOR SMX
	2BR-F3391-00-P2	PANEL, FRONT	1			UR SMX FOR RYC1
2	90183-05807	NUT, SPRING	2			
3	2BR-F835U-00-P0	PANEL 1	1			UR FOR DRMK
	2BR-F835U-00-P1	PANEL 1	1			UR FOR SMX
	2BR-F835U-00-P2	PANEL 1	1			UR FOR RYC1
4	90183-05807	NUT, SPRING	5			
5	97707-50014	SCREW, TRUSS HEAD TAPPING	1			
6	1PN-F6329-00	CAP, RUBBER	1			
7	2BR-F835V-00-P0	PANEL 2	1			UR FOR DRMK
	2BR-F835V-00-P1	PANEL 2	1			UR FOR SMX
	2BR-F835V-00-P2	PANEL 2	1			UR FOR RYC1
8	90183-05807	NUT, SPRING	5			
9	97707-50014	SCREW, TRUSS HEAD TAPPING	1			
10	1PN-F6329-00	CAP, RUBBER	1			
11	2BR-F3397-00-P0	PANEL, FRONT 2	1			UR FOR DRMK
	2BR-F3397-00-P1	PANEL, FRONT 2	1			UR FOR SMX
	2BR-F3397-00-P2	PANEL, FRONT 2	1			UR FOR RYC1
12	44P-F8312-00	LEG SHIELD 2	1			
13	90183-05807	NUT, SPRING	2			
14	90111-06815	BOLT,HEX. SOCKET BUTTON	1			
15	90387-07811	COLLAR	1			
16	97707-50014	SCREW, TRUSS HEAD TAPPING	14			
17	44P-F836K-00-P4	PANEL, INNER 1	1			SMX FOR DRMK,RYC1
	44P-F836K-00-P5	PANEL, INNER 1	1			MT1 FOR SMX
18	44P-F836L-00-P4	PANEL, INNER 2	1			SMX FOR DRMK,RYC1



2BR1440-N280

FIG. 28 LEG SHIELD

REF. NO.	PART NO.	DESCRIPTION	2BR1			REMARKS
18	44P-F836L-00-P5	PANEL, INNER 2	1			MT1 FOR SMX
19	90183-05807	NUT, SPRING	4			
20	2BR-F8385-00	COVER, UNDER	1			
21	97707-50014	SCREW, TRUSS HEAD TAPPING	4			
22	44P-F1552-00	FENDER, INNER	1			
23	90183-05807	NUT, SPRING	4			
24	97707-50014	SCREW, TRUSS HEAD TAPPING	2			
25	5VW-F313B-00	EMBLEM, 1	1			
26	5P2-F835Y-01	LABEL, CAUTION	1			
27	31D-F1568-30	LABEL, WARNING	1			
28	1VP-F815P-00	LABEL, NOTICE 1	1			
29	2BR-F8391-00	GRAPHIC 1	1			UR FOR DRMK
	2BR-F8391-10	GRAPHIC 1	1			UR FOR SMX
	2BR-F8391-20	GRAPHIC 1	1			UR FOR RYC1
30	2BR-F8393-00	GRAPHIC 3	1			UR FOR DRMK
	2BR-F8393-10	GRAPHIC 3	1			UR FOR SMX
	2BR-F8393-20	GRAPHIC 3	1			UR FOR RYC1
31	2BR-F8394-00	GRAPHIC 4	1			UR FOR DRMK
	2BR-F8394-10	GRAPHIC 4	1			UR FOR SMX
	2BR-F8394-20	GRAPHIC 4	1			UR FOR RYC1
32	2BR-F8398-00	GRAPHIC 5	1			UR FOR DRMK
	2BR-F8398-10	GRAPHIC 5	1			UR FOR SMX
	2BR-F8398-20	GRAPHIC 5	1			UR FOR RYC1
33	2BR-F8399-00	GRAPHIC 6	1			UR FOR DRMK
	2BR-F8399-10	GRAPHIC 6	1			UR FOR SMX
	2BR-F8399-20	GRAPHIC 6	1			UR FOR RYC1
34	2BR-F839A-00	GRAPHIC 7	1			UR FOR DRMK

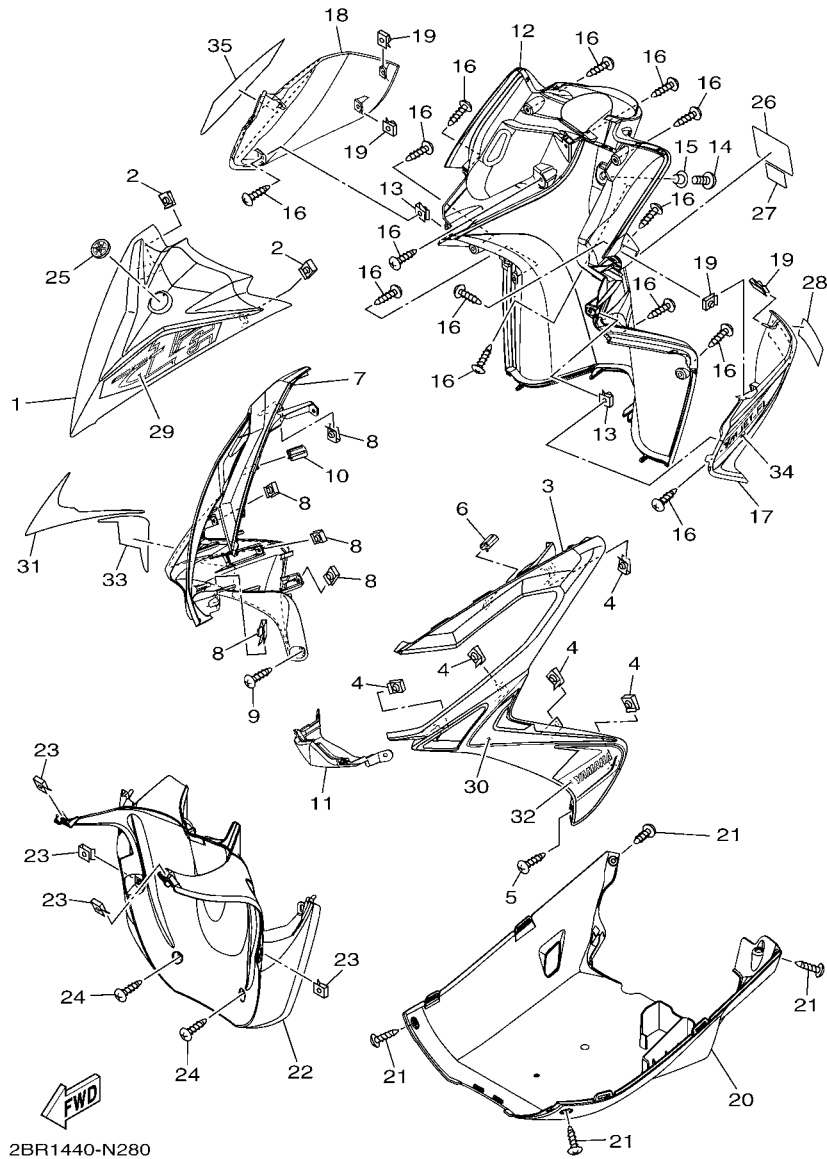


FIG. 28 LEG SHIELD

REF. NO.	PART NO.	DESCRIPTION	2BR1			REMARKS
34	2BR-F839A-10	GRAPHIC 7	1			UR FOR SMX
	2BR-F839A-20	GRAPHIC 7	1			UR FOR RYC1
35	2BR-F839E-00	GRAPHIC 8	1			UR FOR DRMK
	2BR-F839E-10	GRAPHIC 8	1			UR FOR SMX
	2BR-F839E-20	GRAPHIC 8	1			UR FOR RYC1
<hr style="border-top: 1px dashed black;"/>						
<hr style="border-top: 1px dashed black;"/>						
<hr style="border-top: 1px dashed black;"/>						
<hr style="border-top: 1px dashed black;"/>						
<hr style="border-top: 1px dashed black;"/>						
<hr style="border-top: 1px dashed black;"/>						
<hr style="border-top: 1px dashed black;"/>						
<hr style="border-top: 1px dashed black;"/>						
<hr style="border-top: 1px dashed black;"/>						

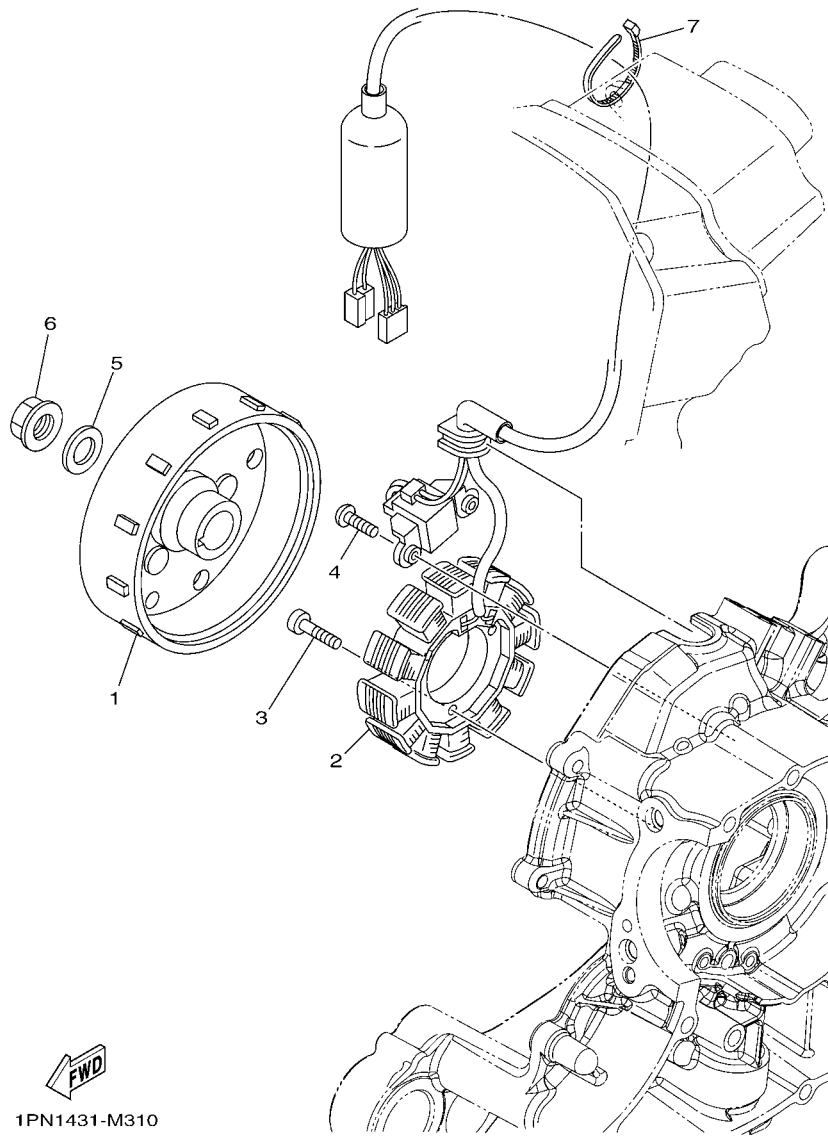
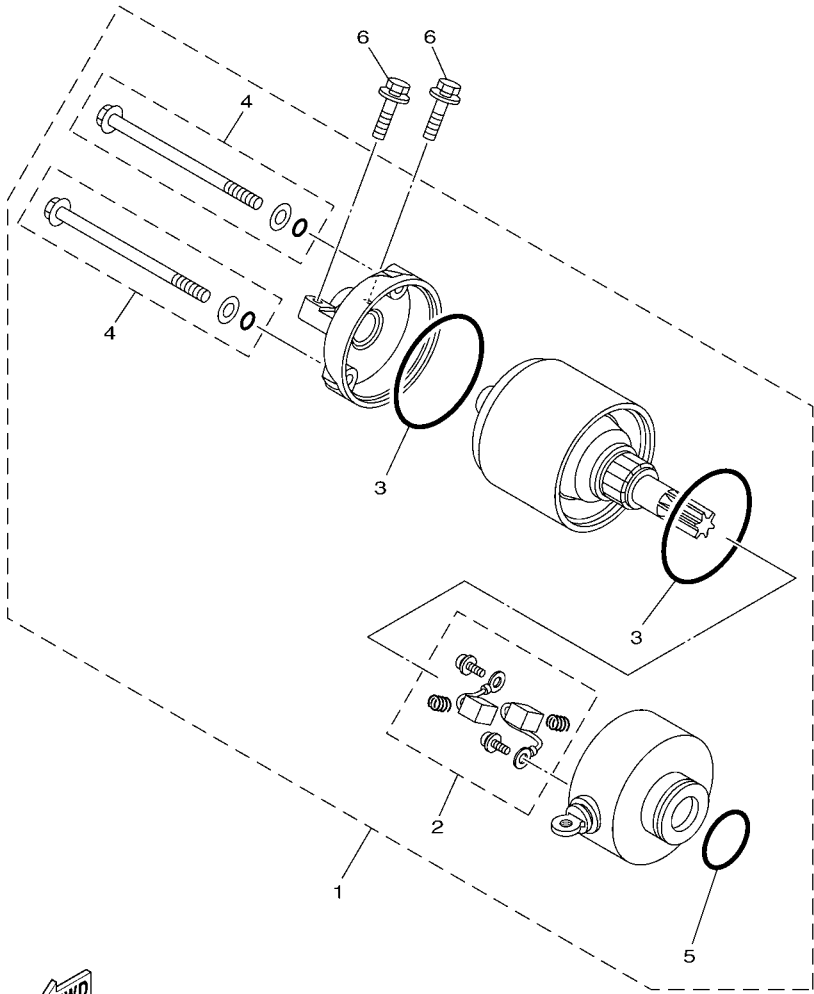


FIG. 29 GENERATOR

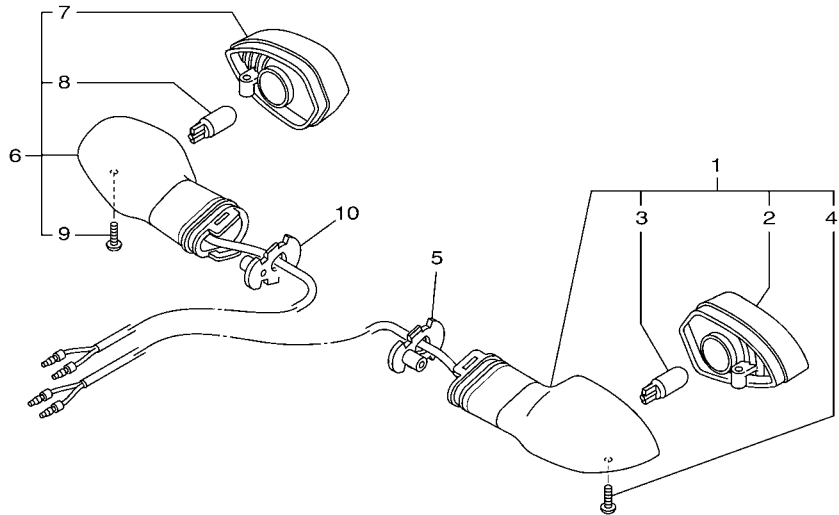
REF. NO.	PART NO.	DESCRIPTION	2BR1				REMARKS
1	1LB-H1450-00	ROTOR ASSY	1				
2	1LB-H1410-00	STATOR ASSY	1				
3	91312-06020	BOLT	3				
4	98502-06016	SCREW, PAN HEAD	2				
5	90201-12688	WASHER, PLATE	1				
6	90179-12004	NUT	1				
7	90464-36800	CLAMP	1				



1PN1431-M320

FIG. 30 STARTING MOTOR

REF. NO.	PART NO.	DESCRIPTION	2BR1				REMARKS
1	1LB-H1890-00	MOTOR ASSY	1				
2	5TL-H1801-00	.BRUSH SET	1				
3	5TL-H182M-00	.O-RING	2				
4	3UH-H1828-01	.SCREW SET	2				
5	4FP-H182L-00	.O-RING 1	1				
6	97512-06525	BOLT, WITH WASHER	2				




 2BR1440-N310

FIG. 31 FLASHER LIGHT

REF. NO.	PART NO.	DESCRIPTION	2BR1				REMARKS
1	2BR-H3330-00	REAR FLASHER LIGHT ASSY 1	1				
2	1VP-H333A-00	.LENS COMP 1	1				
3	1VP-H3311-00	.BULB (12V-10W)	1				
4	1VP-H3333-00	.SCREW, LENS FITTING	1				
5	1VP-H3318-00	STAY, FLASHER 1	1				
6	2BR-H3340-00	REAR FLASHER LIGHT ASSY 2	1				
7	1VP-H334A-00	.LENS COMP 2	1				
8	1VP-H3311-00	.BULB (12V-10W)	1				
9	1VP-H3333-00	.SCREW, LENS FITTING	1				
10	1VP-H3318-00	STAY, FLASHER 1	1				

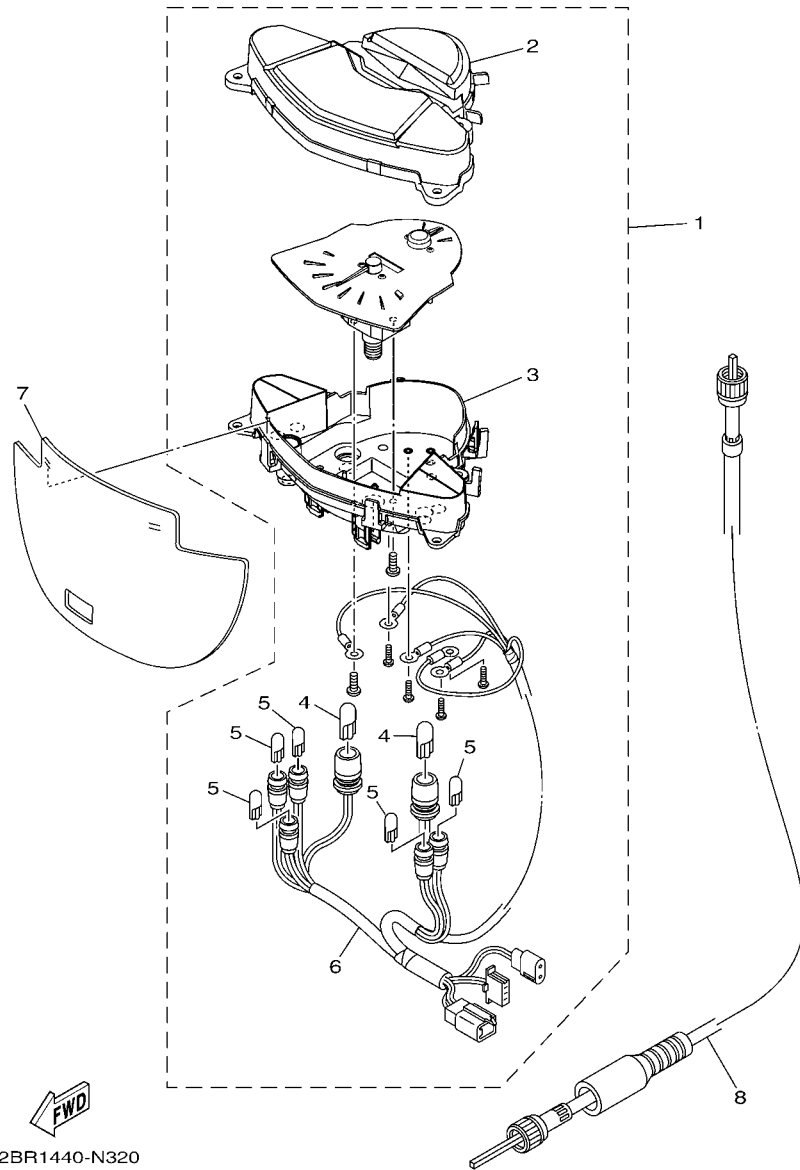


FIG. 32 METER

REF. NO.	PART NO.	DESCRIPTION	2BR1				REMARKS
1	2BR-H3510-00	SPEEDOMETER ASSY	1				
2	44P-H3511-00	.LENS, SPEEDOMETER	1				
3	2BR-H353F-00	.CASE, METER LOWER	1				
4	1VP-H3518-00	.BULB, METER (T10 12V-3.4W)	2				
5	5BU-H3517-00	.BULB (T6.5 12V-1.7W)	5				
6	2BR-H3509-00	.SOCKET CORD ASSY	1				
7	2BR-H3507-00	COVER, SPEEDOMETER	1				
8	2BR-H3550-00	SPEEDOMETER CABLE ASSY	1				

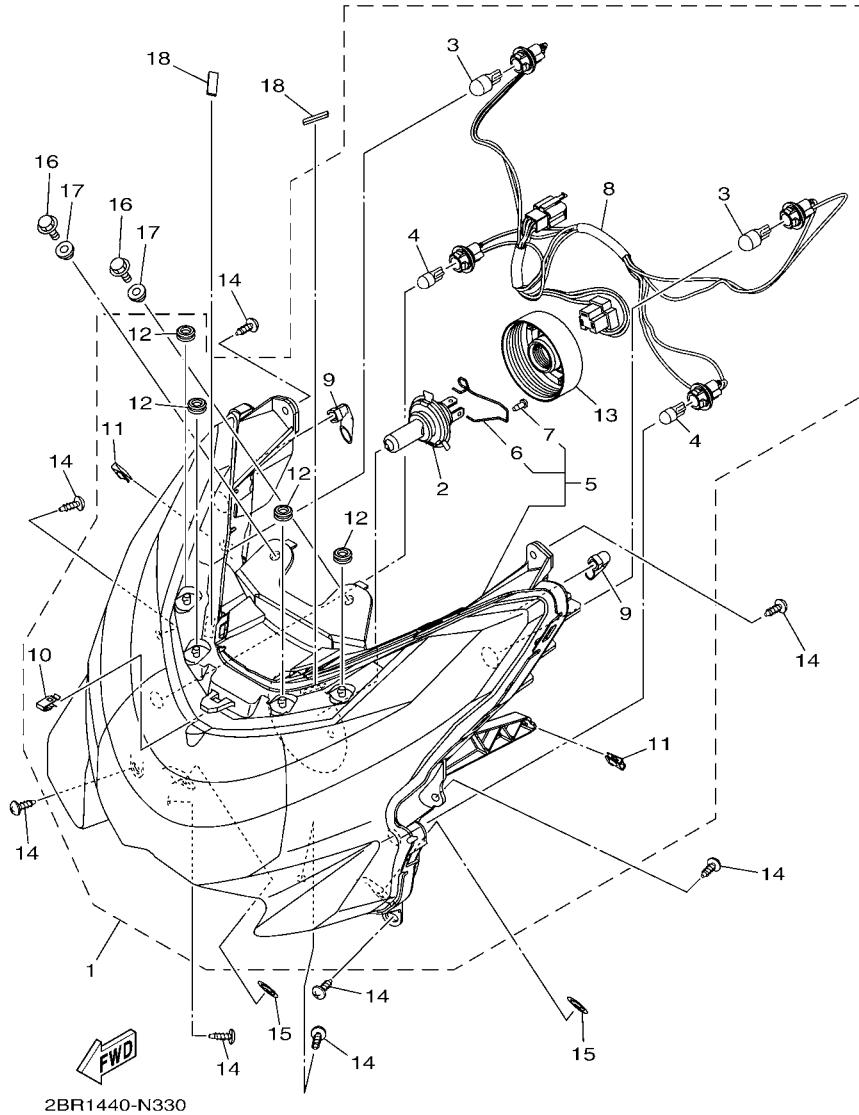


FIG. 33 HEADLIGHT

REF. NO.	PART NO.	DESCRIPTION	2BR1				REMARKS
1	2BR-H4300-00	HEADLIGHT ASSY	1				
2	5B9-H4314-10	.BULB, HEADLIGHT (12V 35/35W)	1				
3	2BR-H3311-00	.BULB, FLASHER (T13 12V-10W)	2				
4	2BR-H3516-00	.BULB (W5W 12V-5W)	2				
5	2BR-H430A-00	.HEADLIGHT UNIT ASSY	1				
6	2BR-H4393-10	..HOLDER BULB	1				
7	5B9-H4192-00	..SCREW, SPECIAL	1				
8	2BR-H4312-00	.CORD ASSY	1				
9	1PN-H411V-00	.PIPE AIRVENT	2				
10	5P0-F8379-00	.HOOK	1				
11	90183-05807	.NUT, SPRING	2				
12	1PN-H4759-00	.GROMMET	4				
13	2BR-H4397-00	.COVER, SOCKET	1				
14	97707-50014	SCREW, TRUSS HEAD TAPPING	8				
15	90183-06815	NUT, SPRING	2				
16	90119-06044	BOLT, WITH WASHER	2				
17	90387-07023	COLLAR	2				
18	1LB-H4527-00	DAMPER	2				

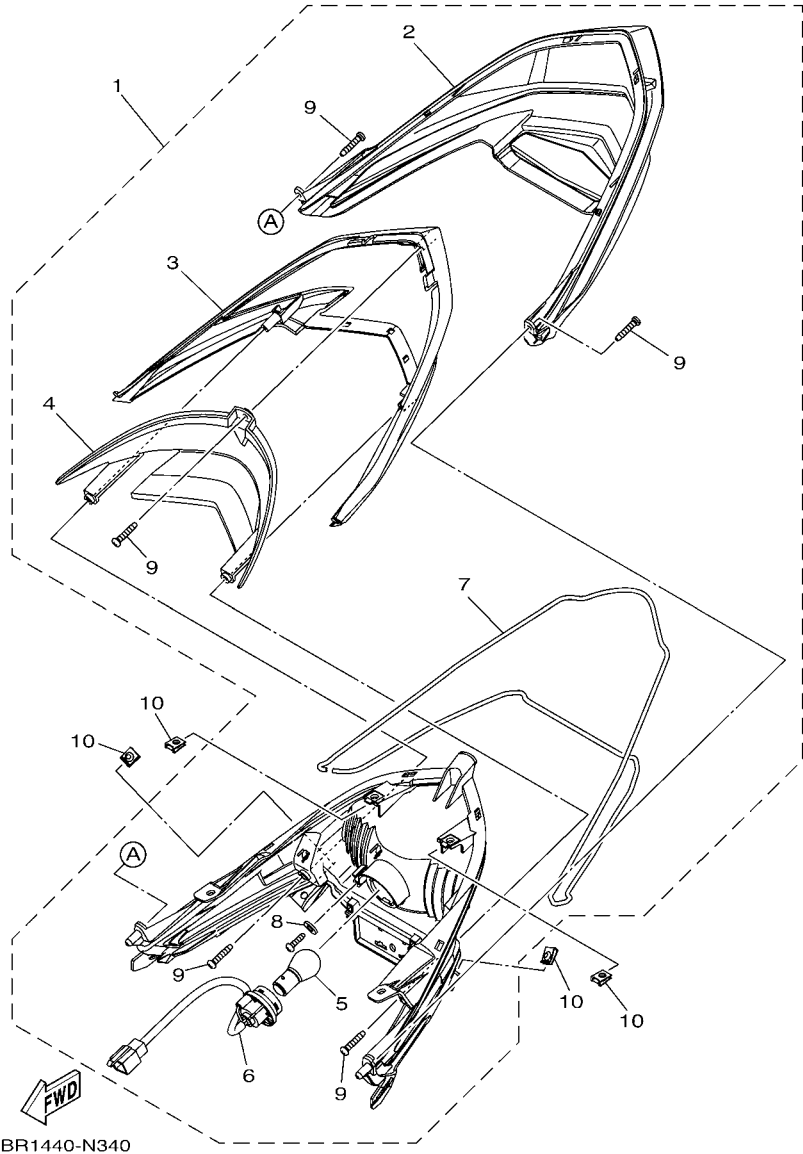
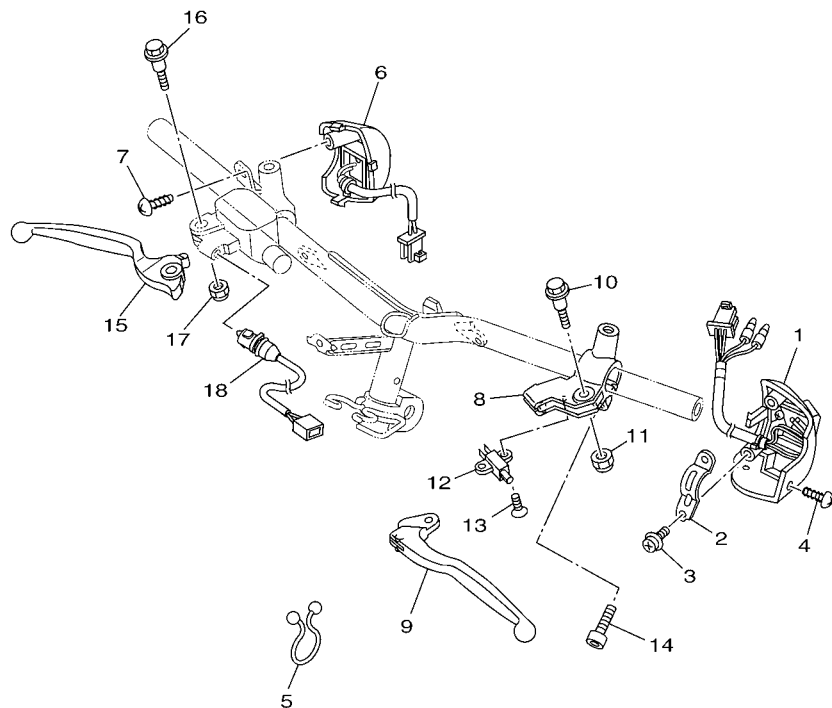


FIG. 34 TAILLIGHT

REF. NO.	PART NO.	DESCRIPTION	2BR1				REMARKS
1	2BR-H4710-00	TAILLIGHT UNIT ASSY	1				
2	2BR-H4733-00	.LENS, 1	1				
3	2BR-H4716-00	.COVER, TAILLIGHT	1				
4	2BR-H4721-00	.LENS, TAILLIGHT	1				
5	10C-H4714-00	.BULB (12V-21/5W)	1				
6	2BR-H4735-00	.SOCKET CORD ASSY	1				
7	2BR-H4723-00	.GASKET, TAIL LENS	1				
8	2BR-H1554-00	.WASHER	1				
9	97702-04116	.SCREW, TAPPING	5				
10	90183-05807	NUT, SPRING	4				

FIG. 35 HANDLE SWITCH & LEVER



REF. NO.	PART NO.	DESCRIPTION	2BR1				REMARKS
1	44D-H3973-00	SWITCH, HANDLE 3	1				
2	2BR-H3955-00	BRACKET 1	1				
3	97607-05216	SCREW, WITH WASHER	2				
4	97707-50014	SCREW, TRUSS HEAD TAPPING	1				
5	90464-23811	CLAMP	2				
6	1S8-H3976-01	SWITCH, HANDLE 1	1				
7	97702-50020	SCREW, TAPPING	1				
8	5TL-H2911-10	HOLDER, LEVER 1 (BLACK)	1				
9	5TL-H3912-10	LEVER 1 (0098, BLACK)	1				
10	90109-06814	BOLT	1				
11	95607-06100	NUT, U	1				
12	5TL-H3980-02	FRONT STOP SWITCH ASSY	1				
13	9870M-03008	SCREW, FLAT HEAD	1				
14	91312-06020	BOLT	1				
15	5VV-H3922-10	LEVER 2 (0098/BLACK)	1				
16	90109-06577	BOLT	1				
17	95602-06100	NUT, U	1				
18	44D-H3980-00	FRONT STOP SWITCH ASSY	1				

 2BR1440-N350

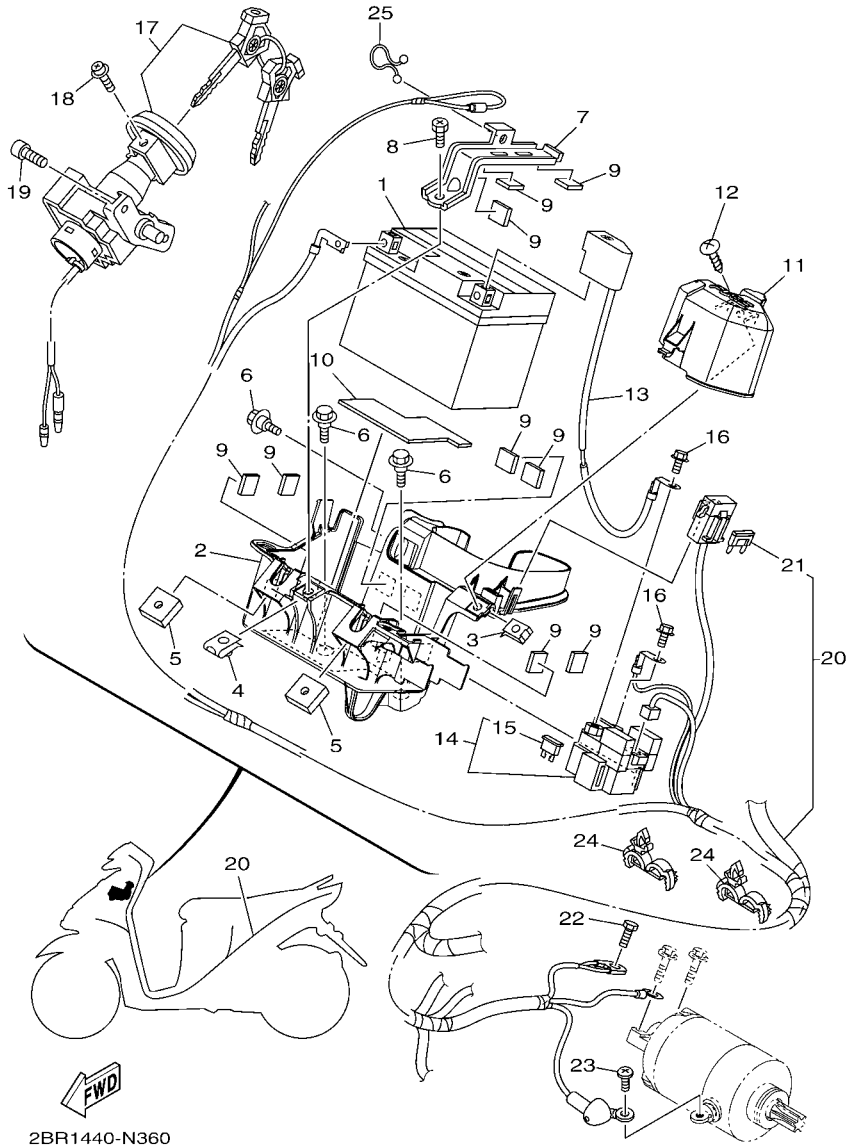


FIG. 36 ELECTRICAL 1

REF. NO.	PART NO.	DESCRIPTION	2BR1				REMARKS
1	10C-H2100-01	BATTERY ASSY (GS GTZ5S)	1				
2	2BR-H212B-00	BOX, BATTERY 1	1				
3	90183-05807	NUT, SPRING	1				
4	90183-06800	NUT, SPRING	1				
5	90173-06806	NUT, SQUARE	2				
6	90109-06887	BOLT	3				
7	2BR-H2136-00	PLATE, BATTERY FITTING	1				
8	90153-06807	SCREW, HEXAGON	1				
9	90520-03801	DAMPER, PLATE	9				
10	44P-H2176-00	DAMPER	1				
11	2BR-H234W-00	COVER, CAP	1				
12	97707-50014	SCREW, TRUSS HEAD TAPPING	1				
13	44P-H2115-00	WIRE, PLUS LEAD	1				
14	1LB-H1940-00	STARTER RELAY ASSY	1				
15	54P-H2151-00	.FUSE (15A)	2				
16	95022-06008	BOLT, FLANGE	2				
17	1VB-XH250-00	MAIN SW. STRG. LOCK SUB ASSY	1				
18	97602-05208	SCREW, PAN HEAD WITH WASHER	1				
19	91312-06014	BOLT	2				
20	2BR-H2590-00	WIRE HARNESS ASSY	1				
21	2BR-H2151-00	.FUSE	1				
22	97002-06012	BOLT	1				
23	98902-05008	SCREW, BIND	1				
24	90464-18806	CLAMP	2				
25	90464-15804	CLAMP	1				

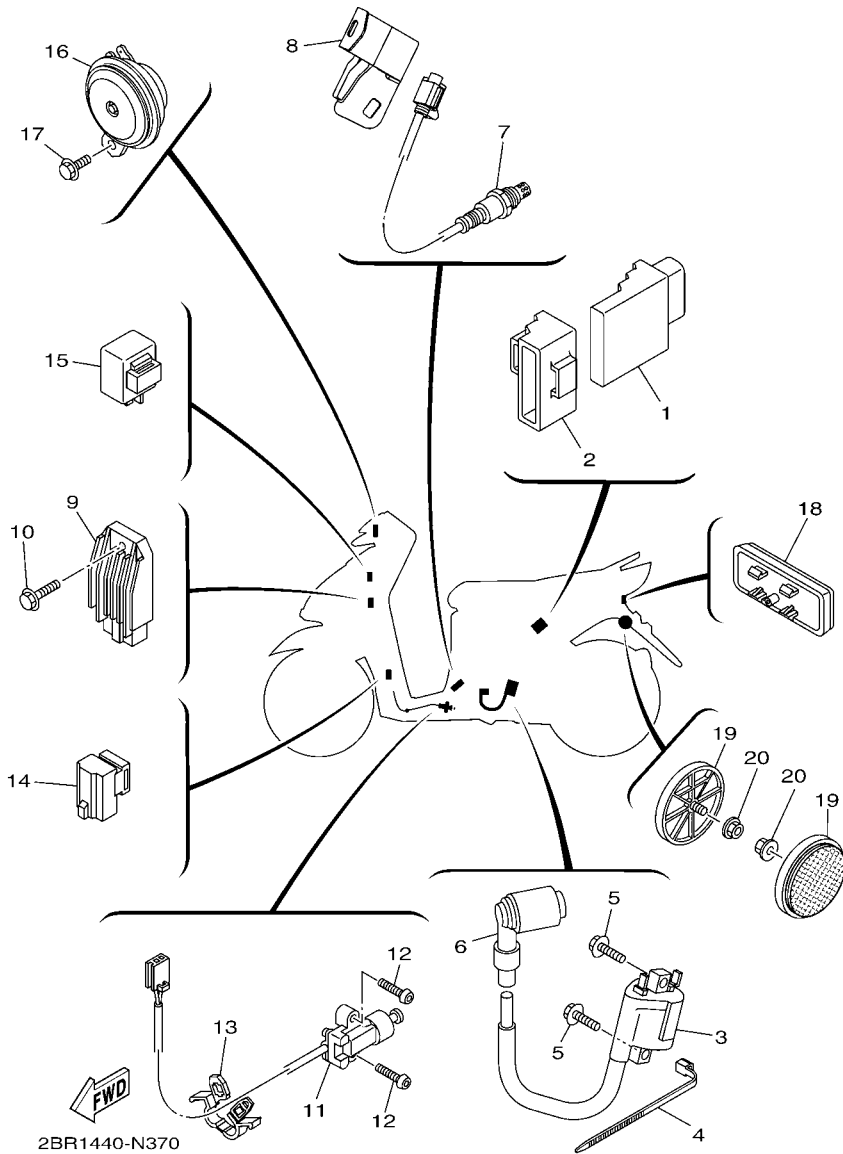


FIG. 37 ELECTRICAL 2

REF. NO.	PART NO.	DESCRIPTION	2BR1				REMARKS
1	2BR-H591A-00	ENGINE CONTROL UNIT ASSY	1				
2	2BR-H5546-00	BAND	1				
3	1LB-H2310-00	IGNITION COIL ASSY	1				
4	90464-13073	CLAMP	1				
5	97022-06020	BOLT, HEXAGON	2				
6	1LB-H2370-00	PLUG CAP ASSY	1				
7	1DY-H592A-01	SENSOR, OXYGEN	1				
8	2BR-H252U-00	COVER	1				
9	1GS-H1960-00	RECTIFIER & REGULATOR ASSY	1				
10	95022-06020	BOLT, FLANGE	1				
11	1LB-H2566-00	SWITCH, SIDE STAND	1				
12	90111-05810	BOLT,HEX. SOCKET BUTTON	2				
13	90464-07805	CLAMP	1				
14	3D9-81950-00	RELAY ASSY (3D9-00)	1				
15	5D9-H3350-00	FLASHER RELAY ASSY	1				
16	2BR-H3371-00	HORN	1				
17	95022-06010	BOLT, FLANGE	1				
18	54P-H5130-00	REAR REFLECTOR ASSY	1				
19	1CJ-H5111-00	REFLECTOR, FRONT 1	2				
20	95702-06500	NUT, FLANGE	2				

NUMERICAL INDEX

PART NO.	REF. NO.	PART NO.	REF. NO.	PART NO.	REF. NO.	PART NO.	REF. NO.	PART NO.	REF. NO.	PART NO.	REF. NO.
52S-12410-00	6 - 1	1LB-E2228-00	4 - 11	1LB-E4409-00	8 - 32	33S-E5484-00	11 - 23	2BR-F1611-00	16 - 4	31B-F3111-00	19 - 20
52S-12439-00	6 - 2	1LB-E2231-00	4 - 7	1LB-E4411-00	8 - 12	44D-E5495-00	11 - 18	44P-F1621-00	16 - 12	2BR-F3126-00	19 - 5
5LW-15659-01	11 - 6	44D-E2233-00	4 - 8	1LB-E4412-00	8 - 24	44D-E5512-00	12 - 6	2BR-F1652-00	16 - 8	2BR-F3136-00	19 - 2
22F-23411-01	19 - 25	33S-E2241-00	4 - 10	1LB-E4417-00	8 - 23	44D-E5521-00	12 - 7	44P-F1711-00-P4	17 - 5	5VW-F313B-00	28 - 25
22F-23412-01	19 - 24	44D-E2422-00	5 - 1	44D-E4422-00	8 - 13	44D-E5524-00	12 - 1	44P-F1711-00-P5	17 - 5	1PN-F3141-00	19 - 15
22F-2341E-00	19 - 26	44D-E2439-00	5 - 4	1LB-E4425-00	8 - 33	44D-E5570-02	12 - 4	44P-F1711-00-P6	17 - 5	4XC-F3144-00	19 - 14
3T5-24612-20	20 - 14	1LB-E2446-00	5 - 12	1LB-E4426-00	8 - 50	44D-E5598-00	12 - 5	44P-F171E-00-P1	17 - 21	4XC-F3145-00	19 - 3
36Y-2589H-00	26 - 8	44D-E2450-00	5 - 2	1LB-E4435-00	8 - 19	44D-E5601-00	12 - 8	44P-F171E-00-P4	17 - 21		19 - 6
3D9-81950-00	37 - 14	44D-E2456-00	5 - 9	4ST-E443E-00	11 - 4	44P-E5620-00	12 - 14	44P-F171E-00-P5	17 - 21	2JG-F3147-00	19 - 21
1LB-E1102-00	1 - 1	44D-E2459-00	5 - 8	5TL-E443E-00	8 - 20	44D-E5630-00	12 - 16	44P-F1721-00-P4	17 - 11	5HV-F3152-00	19 - 11
54P-E111F-00	4 - 3	1PN-E2460-00	6 - 7	5TP-E443G-00	8 - 22	5MX-E5657-00	13 - 12	44P-F1721-00-P5	17 - 11	31B-F3153-00	19 - 22
1LB-E111J-00	1 - 5	1LB-E2463-00	6 - 4	1LB-E4445-00	8 - 27	5MX-E5673-00	12 - 17	44P-F1721-00-P6	17 - 11	5P0-F3156-00	19 - 4
33S-E1133-10	1 - 2	1LB-E2467-00	6 - 25	1LB-E4449-00	8 - 28	1LB-E5693-00	12 - 2	2BR-F172W-00	17 - 1		19 - 7
1LB-E1165-00	1 - 10	44D-E2481-01	6 - 14	44D-E4449-00	8 - 18	1LB-E5744-00	13 - 26	2BR-F1731-00-P0	17 - 17	2JG-F3157-00	19 - 10
1LB-E1166-00	8 - 35	44D-E2482-01	6 - 17	1LB-E4452-00	8 - 16	44D-E6111-00	14 - 10	2BR-F1731-00-P1	17 - 17	509-F3158-L0	19 - 12
1LB-E1169-00	1 - 11	1LB-E2483-00	6 - 19	1LB-E4453-00	8 - 17	1LB-E6611-00	13 - 28	5P2-F1737-00	17 - 23	33S-F3170-00	19 - 9
1LB-E1173-00	1 - 14	1PN-E2572-00	8 - 45	44D-E4455-00	8 - 29	1LB-E6620-00	13 - 15	2BR-F173E-00	17 - 30	31B-F3181-00	19 - 13
1PN-E1181-00	1 - 20	33S-E2590-00	6 - 8	1LB-E4457-01	8 - 25	1LB-E6626-00	13 - 16	2BR-F173E-10	17 - 30	44P-F3340-00	19 - 16
1LB-E1191-00	1 - 9	44D-E2611-00	6 - 27	10C-E4613-00	9 - 7	44D-E7211-00	14 - 5	2BR-F173E-00	17 - 30	4D0-F3346-00	19 - 19
1LB-E1193-00	1 - 17	33S-E2615-00	6 - 9	2BR-E4711-00	9 - 1	44D-E7410-00	14 - 1	2BR-F173F-00	17 - 31	2BR-F3391-00-P0	28 - 1
4YS-E1198-00	10 - 30	1LB-E2621-00	6 - 21	2BR-E4718-00	9 - 2	1LB-E7421-00	14 - 4	2BR-F173F-10	17 - 31	2BR-F3391-00-P1	28 - 1
1LB-E1311-00	1 - 25	44D-E2659-00	6 - 29	2BR-E4799-00	9 - 3	1LB-E7465-00	13 - 19	2BR-F173F-20	17 - 31	2BR-F3391-00-P2	28 - 1
44D-E1351-00	1 - 26	44D-E2662-00	3 - 11	1LB-E4877-00	8 - 30	44D-E7611-00	13 - 11	2BR-F1741-00-P0	17 - 19	2BR-F3397-00-P0	28 - 11
1LB-E1400-00	2 - 1	44D-E2668-00	6 - 30	54P-E5113-00	10 - 26	44D-E7620-00	13 - 1	2BR-F1741-00-P1	17 - 19	2BR-F3397-00-P1	28 - 11
1LB-E1422-00	2 - 5	44D-E2669-00	6 - 31	40D-E5138-00	1 - 4	44D-E7623-00	13 - 5	2BR-F174G-00	17 - 32	2BR-F3397-00-P2	28 - 11
54P-E1445-00	2 - 14	33S-E2843-00	6 - 10	1LB-E5150-00	10 - 1	44D-E7632-00	13 - 4	2BR-F174G-10	17 - 32	2BR-F3415-00	19 - 28
1PN-E1603-00	2 - 13	44D-E3300-00	7 - 1	44D-E5191-00	11 - 7	44D-E7641-00	13 - 10	2BR-F174G-20	17 - 32	3AY-F3416-00	19 - 27
33S-E1631-03	2 - 10	44D-E3324-00	2 - 8	1LB-E5316-00	11 - 24	44D-E7645-00	13 - 8	2BR-F174H-00	17 - 33	2BR-F3418-00	19 - 31
1S7-E1633-00	2 - 11	5LW-E3411-00	7 - 5	54P-E5351-00	7 - 4	1LB-E7649-00	13 - 31	2BR-F174H-10	17 - 33	29B-F3462-00	19 - 17
33S-E1651-00	2 - 4	5LW-E3452-00	2 - 6	1LB-E5357-00	8 - 2	44D-E7653-00	13 - 6	2BR-F174H-20	17 - 33	5BP-F3873-01	19 - 23
33S-E1681-00	2 - 2	5LW-E3475-00	7 - 2	1LB-E5362-00	10 - 27	1LB-E7660-00	13 - 17	2BR-F174J-00	17 - 34	5BP-F3875-00	19 - 18
54P-E2111-00	3 - 1	1LB-E3557-00	8 - 44	5LW-E5363-00	10 - 20	1LB-E7664-00	13 - 21	2BR-F174J-10	17 - 34	2BR-F4110-00	20 - 1
54P-E2113-00	3 - 4	1PN-E3585-00	8 - 1	5LW-E5371-01	10 - 5	1LB-E7668-00	13 - 24	2BR-F174J-20	17 - 34	2BR-F414A-00	20 - 15
54P-E2117-00	3 - 6	1LB-E3750-00	8 - 5		11 - 3	1LB-E7670-00	13 - 18	2BR-F174K-00	17 - 35	54P-F414G-00	20 - 10
5TL-E2118-00	3 - 5	54P-E3761-00	8 - 39	44D-E5373-00	10 - 6	1LB-E7683-00	13 - 22	2BR-F174K-10	17 - 35	2BR-F419A-00	20 - 4
54P-E2119-00	3 - 3	5LW-E3769-00	10 - 28	44D-E5383-00	11 - 9	1LB-E7690-00	13 - 23	2BR-F174K-20	17 - 35	2BR-F419F-00	20 - 6
1LB-E2121-00	3 - 2	1DB-E3770-00	8 - 38	44D-E5407-00	11 - 16	2BR-F1110-00	15 - 1	2BR-F177F-00	17 - 2	1LB-F4425-00	20 - 11
1DY-E2126-00	3 - 7	1LB-E3895-00	8 - 48	14D-E5408-00	10 - 7	44P-F1161-00	19 - 36	3XL-F178A-00	11 - 25	5LW-F4610-01	20 - 13
54P-E2146-00	3 - 12	1PN-E3907-01	20 - 8	1LB-E5411-00	11 - 1	44P-F117F-00	15 - 14	44P-F1816-00	17 - 27	44P-F470F-00	21 - 2
54P-E2151-00	3 - 8	54P-E3915-00	20 - 9	1LB-E5413-00	11 - 21	2BR-F117G-00	15 - 18	44P-F1817-00	17 - 28	5VW-F4726-00	21 - 13
54P-E2151-10	3 - 8	1DB-E3938-00	8 - 42	44D-E5417-01	5 - 3	2BR-F1410-00	15 - 2	44P-F1871-00	17 - 24	5VW-F4727-00	21 - 12
33S-E2159-00	3 - 10	1LB-E3971-00	20 - 3	44D-E5421-00	10 - 22	44P-F1459-00	15 - 4	5YP-F1875-00	17 - 26	44P-F4730-00	21 - 1
1LB-E2170-00	4 - 1	54P-E4137-00	8 - 43	44D-E5423-00	10 - 11	44P-F1511-00-P4	16 - 1	5P0-F2141-00	15 - 5	44P-F473R-00	21 - 4
1LB-E2176-00	4 - 5	54P-E4147-00	8 - 40	1LB-E5451-00	11 - 2	44P-F1511-00-P5	16 - 1	2BR-F2210-00	18 - 1	44P-F4741-00	21 - 3
44D-E2210-00	4 - 12	5CA-E4147-00	8 - 41	44D-E5461-00	10 - 23	44P-F1511-00-P6	16 - 1	5MX-F2216-00	10 - 3	44P-F4747-00	21 - 6
1DY-E2213-00	4 - 14	54P-E416A-00	8 - 9	44D-E5471-00	11 - 17	15K-F1518-00	16 - 3	2BR-F3100-00	19 - 1	1S8-F4768-00	21 - 20
5MX-E2222-00	4 - 13	54P-E4243-00	8 - 7	44D-E5472-00	11 - 19	44P-F1552-00	28 - 22	5P0-F3108-00	25 - 19	44P-F4773-00-P0	21 - 21
44D-E2223-00	5 - 5	54P-E4335-00	8 - 10	44D-E5473-00	11 - 22	31D-F1568-30	28 - 27	1PN-F3110-00	19 - 8	5P0-F4780-01	21 - 18

NUMERICAL INDEX

PART NO.	REF. NO.	PART NO.	REF. NO.	PART NO.	REF. NO.	PART NO.	REF. NO.	PART NO.	REF. NO.	PART NO.	REF. NO.
44P-F478E-01	21 - 15	1PN-F6329-00	28 - 6	2BR-F8398-00	28 - 32	2BR-H3371-00	37 - 16	90105-088E1	4 - 4	90183-05807	33 - 11
5VW-F5168-01-0X	22 - 1		28 - 10	2BR-F8398-10	28 - 32	2BR-H3507-00	32 - 7	90105-088E3	15 - 11		34 - 10
3NA-F5181-01	22 - 8	44P-F6351-00	25 - 31	2BR-F8398-20	28 - 32	2BR-H3509-00	32 - 6	90105-088E8	18 - 2		36 - 3
5VV-F5190-01	22 - 11	44P-F637G-00	25 - 32	2BR-F8399-00	28 - 33	2BR-H3510-00	32 - 1	90105-10036	25 - 2	90183-06800	36 - 4
5YP-F530K-00	24 - 7	2BR-F7111-00	27 - 1	2BR-F8399-10	28 - 33	44P-H3511-00	32 - 2	90105-10283	15 - 7	90183-06815	17 - 3
5LW-F5326-01	24 - 4	33S-F7112-00	27 - 2	2BR-F8399-20	28 - 33	2BR-H3516-00	33 - 4	90105-10831	23 - 14		33 - 15
44P-F5338-00-0X	24 - 1	5P2-F7114-00	15 - 9	2BR-F839A-00	28 - 34	5BU-H3517-00	32 - 5	90109-06577	35 - 16	90185-10811	22 - 9
5LW-F533A-00	24 - 12	5P2-F7116-00	27 - 14	2BR-F839A-10	28 - 34	1VP-H3518-00	32 - 4	90109-06814	35 - 10	90185-10815	25 - 3
10C-F5351-00	24 - 10	54P-F7121-00	10 - 2	2BR-F839A-20	28 - 34	2BR-H353F-00	32 - 3	90109-06887	16 - 2	90185-16800	24 - 15
5P2-F5355-00	24 - 11	5VW-F7214-00	25 - 33	2BR-F839E-00	28 - 35	2BR-H3550-00	32 - 8		16 - 5	90201-05817	9 - 6
5P0-F5802-00	23 - 4		27 - 15	2BR-F839E-10	28 - 35	2BR-H3559-00-P0	25 - 18		17 - 25	90201-06034	1 - 24
5YP-F5803-50	23 - 5	1LB-F7254-00	27 - 5	2BR-F839E-20	28 - 35	5TL-H3912-10	35 - 9		21 - 7	90201-10065	18 - 4
3C1-F5805-10	23 - 9	44P-F7267-01	27 - 6	1LB-H1410-00	29 - 2	5VV-H3922-10	35 - 15		36 - 6	90201-10118	26 - 3
54P-F580U-01	23 - 3	2BR-F7311-00	27 - 10	1LB-H1450-00	29 - 1	2BR-H3955-00	35 - 2	90111-05810	37 - 12	90201-10831	22 - 10
5TL-F582U-10	23 - 1	5BU-F7431-00	27 - 16	2BR-H1554-00	34 - 8	44D-H3973-00	35 - 1	90111-06807	9 - 4	90201-12688	29 - 5
5P0-F583T-13	26 - 4	5BU-F7433-00	27 - 17	5TL-H1801-00	30 - 2	1S8-H3976-01	35 - 6	90111-06815	28 - 14	90201-154E8	12 - 11
5P0-F5852-10	26 - 7	33S-F7435-00	15 - 13	3UH-H1828-01	30 - 4	44D-H3980-00	35 - 18	90111-08853	23 - 2	90201-16810	24 - 16
5P0-F5854-00	26 - 6	5BU-F7441-00	27 - 21	4FP-H182L-00	30 - 5	5TL-H3980-02	35 - 12	90116-08843	10 - 17	90201-220J8	24 - 17
5P0-F5855-00	26 - 10	5BU-F7444-00	27 - 22	5TL-H182M-00	30 - 3	1PN-H411V-00	33 - 9	90119-06044	16 - 6	90202-26142	19 - 30
5TL-F5867-11	26 - 9	5BU-F7445-00	27 - 18	1LB-H1890-00	30 - 1	5B9-H4192-00	33 - 7		27 - 9	90206-14802	24 - 13
1PN-F5872-00	26 - 1		27 - 23	1LB-H1940-00	36 - 14	2BR-H4300-00	33 - 1		33 - 16	90208-12808	13 - 13
2BR-F5875-00	19 - 32	44P-F7481-01	27 - 7	1GS-H1960-00	37 - 9	2BR-H430A-00	33 - 5	90153-06807	36 - 8	90208-25802	14 - 9
2BR-F5876-00	19 - 34	44P-F7491-00	27 - 26	10C-H2100-01	36 - 1	2BR-H4312-00	33 - 8	90159-06067	17 - 22	90249-12008	25 - 38
5YP-F5917-00	23 - 6	44P-F8100-00	21 - 23	44P-H2115-00	36 - 13	5B9-H4314-10	33 - 2	90159-06801	17 - 18	90252-23800	27 - 20
5P0-F5919-00	23 - 11	1VP-F815P-00	28 - 28	2BR-H212B-00	36 - 2	2BR-H4393-10	33 - 6		17 - 20		27 - 25
5YP-F5924-00	23 - 12	44P-F8312-00	28 - 12	2BR-H2136-00	36 - 7	2BR-H4397-00	33 - 13	90170-05803	3 - 9	90280-03017	2 - 9
5YP-F5925-01	23 - 10	2BR-F835U-00-P0	28 - 3	2BR-H2151-00	36 - 21	1LB-H4527-00	33 - 18	90170-12800	13 - 14	90340-12808	10 - 29
5YP-F5937-00	23 - 7	2BR-F835U-00-P1	28 - 3	54P-H2151-00	36 - 15	2BR-H4710-00	34 - 1	90173-06806	36 - 5	90340-12813	1 - 3
5YP-F5939-00	23 - 13	2BR-F835U-00-P2	28 - 3	44P-H2176-00	36 - 10	10C-H4714-00	34 - 5	90179-06835	25 - 37	90380-15810	12 - 10
2BR-F6110-00	25 - 1	2BR-F835V-00-P0	28 - 7	1LB-H2310-00	37 - 3	2BR-H4716-00	34 - 3	90179-08518	1 - 18	90380-23800	13 - 2
2BR-F6143-00-P0	25 - 4	2BR-F835V-00-P1	28 - 7	2BR-H234W-00	36 - 11	2BR-H4721-00	34 - 4	90179-10803	13 - 30	90387-058M9	17 - 10
2BR-F6145-00	25 - 7	2BR-F835V-00-P2	28 - 7	1LB-H2370-00	37 - 6	2BR-H4723-00	34 - 7	90179-12004	29 - 6		17 - 16
1S8-F6199-00	25 - 15	5P2-F835Y-01	28 - 26	2BR-H252U-00	37 - 8	2BR-H4733-00	34 - 2	90179-25810	19 - 29	90387-068G3	21 - 10
5VW-F6199-00	21 - 5	44P-F836K-00-P4	28 - 17	1LB-H2566-00	37 - 11	2BR-H4735-00	34 - 6	90183-04005	17 - 7	90387-07023	33 - 17
2BR-F61AA-00-P0	25 - 16	44P-F836K-00-P5	28 - 17	2BR-H2590-00	36 - 20	1PN-H4759-00	33 - 12		17 - 13	90387-07811	28 - 15
2BR-F61AA-00-P1	25 - 16	44P-F836L-00-P4	28 - 18	5TL-H2911-10	35 - 8	1CJ-H5111-00	37 - 19		25 - 14	90387-08820	27 - 12
2BR-F61AA-00-P2	25 - 16	44P-F836L-00-P5	28 - 18	1VP-H3311-00	31 - 3	54P-H5130-00	37 - 18	90183-05807	17 - 6	90387-08821	15 - 10
2BR-F6216-00	25 - 13	5P0-F8379-00	33 - 10		31 - 8	2BR-H5546-00	37 - 2		17 - 12	90387-08823	6 - 11
2BR-F6231-00	25 - 10	2BR-F8385-00	28 - 20	2BR-H3311-00	33 - 3	54P-H5801-00	8 - 8		21 - 11	90387-10837	22 - 7
44P-F6240-00	25 - 21	2BR-F8391-00	28 - 29	1VP-H3318-00	31 - 5	2BR-H591A-00	37 - 1		25 - 5	90387-16815	13 - 7
44P-F6241-00	25 - 22	2BR-F8391-10	28 - 29		31 - 10	1DY-H592A-01	37 - 7		25 - 8	90388-10801	15 - 3
1VB-F6246-00	25 - 23	2BR-F8391-20	28 - 29	2BR-H3330-00	31 - 1	5P0-W0041-00	26 - 5		27 - 8	90388-10808	10 - 4
2BR-F6279-00	25 - 29	2BR-F8393-00	28 - 30	1VP-H3333-00	31 - 4	4C9-W0048-00	23 - 8		28 - 2	90401-10159	26 - 2
5LW-F6280-10	25 - 24	2BR-F8393-10	28 - 30		31 - 9	1LB-WE445-00	8 - 15		28 - 4	90430-06014	1 - 7
5P2-F6281-00	25 - 39	2BR-F8393-20	28 - 30	1VP-H333A-00	31 - 2	1VB-XH250-00	36 - 17		28 - 8		1 - 28
5P2-F6282-00	25 - 40	2BR-F8394-00	28 - 31	2BR-H3340-00	31 - 6	90101-06046	24 - 14		28 - 13	90430-08119	10 - 19
5LW-F6290-10	25 - 25	2BR-F8394-10	28 - 31	1VP-H334A-00	31 - 7	90101-08847	27 - 11		28 - 19	90450-27803	6 - 15
2BR-F6301-00	25 - 26	2BR-F8394-20	28 - 31	5D9-H3350-00	37 - 15	90105-06894	5 - 7		28 - 23	90450-46803	8 - 11

NUMERICAL INDEX

PART NO.	REF. NO.	PART NO.	REF. NO.	PART NO.	REF. NO.	PART NO.	REF. NO.	PART NO.	REF. NO.	PART NO.	REF. NO.
90464-07805	37 - 13	91701-08035	27 - 19	93430-08810	27 - 3	95602-10200	15 - 6	97707-50014	36 - 12		
90464-13073	6 - 6		27 - 24	93450-16115	2 - 12		15 - 8	98502-05010	21 - 16		
	37 - 4	91809-14804	1 - 15	93450-32837	12 - 3	95607-06100	35 - 11	98502-05025	25 - 41		
90464-15804	36 - 25	91810-14809	1 - 21	93603-10800	5 - 6	95612-08618	1 - 8	98502-06012	8 - 6		
90464-18806	36 - 24		1 - 22	93603-17800	5 - 10	95702-06500	21 - 14	98502-06016	29 - 4		
90464-23811	35 - 5		5 - 19	93900-00817	22 - 6		37 - 20	98507-05020	7 - 3		
90464-36800	29 - 7		10 - 8		24 - 3	95702-08500	9 - 8	9870M-03008	35 - 13		
90464-50801	15 - 15		10 - 14	94107-14808	22 - 5	95702-10500	24 - 5	98902-05008	36 - 23		
90467-08003	17 - 29		10 - 24	94109-14804	24 - 2	95802-06014	20 - 2	99002-07600	5 - 11		
90467-090A3	6 - 5		11 - 11	94568-F9090	4 - 6	95812-06025	6 - 22	99009-15400	12 - 12		
90467-11106	11 - 5	92012-06012	11 - 10	94700-00891	1 - 19	95812-06030	8 - 47	99009-25400	14 - 8		
90467-11825	8 - 36	92017-05016	25 - 27	95022-06008	36 - 16	95812-06035	1 - 13				
	8 - 37	92902-05200	8 - 26	95022-06010	1 - 6		8 - 34				
	8 - 21	93101-23801	13 - 3		1 - 27	95812-08016	10 - 18				
90467-12808	8 - 49	93102-15801	12 - 13		11 - 8	95812-08045	9 - 9				
90467-15802	8 - 31	93102-17812	14 - 13		19 - 33	95817-06020	11 - 20				
90467-18806	6 - 16	93102-19800	5 - 15		19 - 35	95822-06016	6 - 28				
90467-22801	6 - 18	93102-25815	10 - 12		19 - 37		21 - 22				
	6 - 20	93102-32801	14 - 7		21 - 19	95822-06020	21 - 8				
90480-10332	9 - 5	93106-20808	22 - 3		37 - 17	95827-06030	6 - 13				
90480-14823	21 - 9	93210-07802	24 - 6	95022-06012	21 - 17	95827-06090	11 - 14				
90480-15803	6 - 12	93210-09806	1 - 16		25 - 30	97002-06012	36 - 22				
90501-16004	7 - 6	93210-14816	10 - 21	95022-06014	1 - 12	97022-06020	37 - 5				
90501-16801	25 - 36	93210-16803	5 - 13		5 - 14	97512-06525	30 - 6				
90506-12001	24 - 8	93210-16805	13 - 9		25 - 34	97602-05208	36 - 18				
90506-15001	24 - 9	93210-17802	8 - 46	95022-06020	4 - 15	97602-05320	8 - 14				
90506-35816	27 - 4	93210-28803	13 - 32		5 - 18	97607-05216	35 - 3				
90508-32768	12 - 9	93210-29800	7 - 7		6 - 3	97702-04116	34 - 9				
90520-03801	36 - 9	93210-30611	8 - 3		8 - 4	97702-50020	25 - 20				
90520-08800	15 - 16	93210-42802	13 - 20		37 - 10		35 - 7				
90520-08803	15 - 17	93211-31800	5 - 16	95022-06025	6 - 23	97707-40008	25 - 11				
90520-10803	6 - 32	93211-44801	10 - 13		10 - 15	97707-50012	17 - 9				
90520-10804	6 - 33	93306-002YE	4 - 2	95022-06030	25 - 35		17 - 15				
90520-20002	16 - 11	93306-082Y2	13 - 29	95022-06035	6 - 24	97707-50014	16 - 7				
90520-20813	16 - 9	93306-082Y5	13 - 29		10 - 16		17 - 4				
90520-20814	16 - 10	93306-252XB	14 - 11		10 - 25		17 - 8				
90560-10292	22 - 2	93306-272X2	14 - 6	95022-06060	5 - 20		17 - 14				
91312-05008	25 - 28	93306-300X8	22 - 4		10 - 9		25 - 6				
91312-05010	20 - 12	93306-301XT	14 - 2	95022-06070	5 - 17		25 - 9				
91312-05014	20 - 5	93306-301YS	14 - 3	95022-06100	10 - 10		25 - 12				
	20 - 7	93306-302YF	14 - 2	95027-06020	6 - 26		25 - 17				
91312-06012	4 - 9	93306-303YE	14 - 12	95027-06035	11 - 12		28 - 5				
91312-06014	36 - 19	93306-303YJ	14 - 12	95027-06045	11 - 13		28 - 9				
91312-06020	29 - 3	93306-372X0	2 - 7	95027-06080	11 - 15		28 - 16				
	35 - 14	93306-372Y4	2 - 7	95302-10600	18 - 3		28 - 21				
91312-06025	26 - 11	93306-901Y6	13 - 25	95602-06100	35 - 17		28 - 24				
91312-06095	1 - 23	93310-628X8	2 - 3	95602-08200	15 - 12		33 - 14				
91317-06025	12 - 15	93317-417Y2	13 - 27		27 - 13		35 - 4				